

ACm

Self-Priming Multistage Centrifugal Pumps

Application

- It can be used to transfer clean water or other liquids similar to water in physical and chemical properties. It is suitable for industrial use and urban water supply, pressure boosting for high buildings and fire fighting, garden irrigation, long-distance water transfer, heating ventilation and air controlling, circulation and pressure boosting for cold and hot water, and supporting equipment etc.

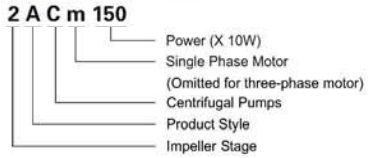
Pump

- Cast iron pump body and support under special anti-rust treatment
- AISI 304 shaft
- Max. liquid temperature: +40°C
- Max. suction: +8 m

Motor

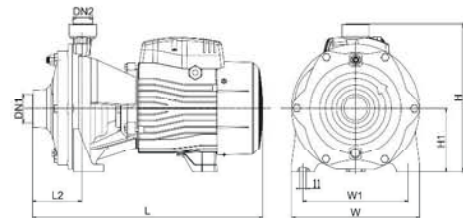
- C&U bearing
- Motor with copper winding
- Built-in thermal protector for single phase motor
- Insulation class: F
- Protection class: IPX4
- Max. ambient temperature: +40°C

Identification Codes



Technical Data

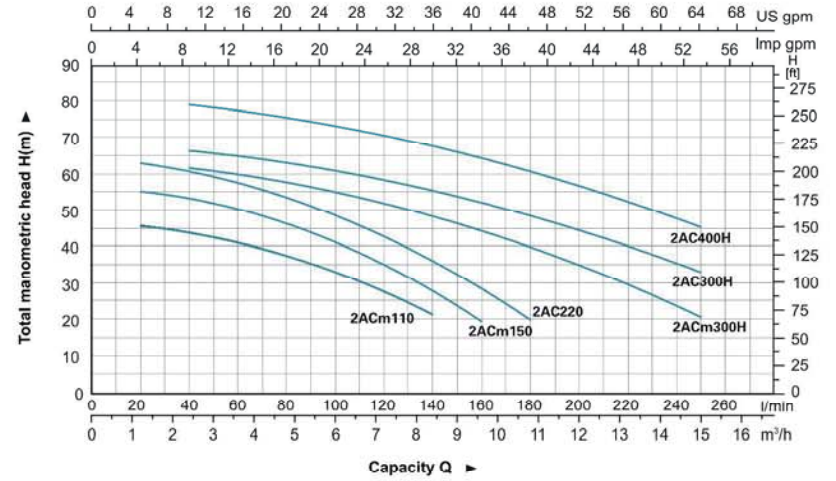
MODEL		POWER		Q (m³/h)		Q (l/min)																				
Single Phase	Three Phase	kW	HP	H (m)		0	1.2	1.8	2.4	3	3.6	4.2	4.8	5.4	6	6.6	7.2	7.5	8.4	9.6	10.8	12				
2ACm110	2AC110	1.1	1.5	H (m)	47	46	45	44	43	41.5	38	35.5	33	30.5	28	26	22									
2ACm150	2AC150	1.5	2		57.5	55.5	54.5	53.5	52	50.5	47	44.5	41.5	38.5	35	33	28	20								
---	2AC220	2.2	3		65	63	62	61	59.5	58	54	51.5	49	46	43	41	36	28.5	20.5							
2ACm300H	---	3	4		65			62	61	60	58	56.5	55	53.5	52.5	52	48.5	44.5	40	35	21					
---	2AC300H	3	4		70			67	66	65	63	62	61	59.5	59	58.5	55.5	52	49	45	33					
---	2AC400H	4	5.5		82			79.5	78.5	77.5	75.5	74.5	73.5	72	71	70.5	67.5	64.5	61	57	45.5					



Dimension

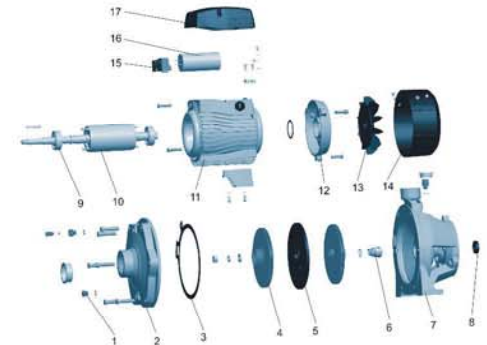
Model	DN1	DN2	L (mm)	W (mm)	H (mm)	L ₁ (mm)	W ₁ (mm)	H ₁ (mm)
2ACm110	1 1/2"	1"	379	200	225	71	162	93
2ACm150			400	225	262	80	185	112
2AC220			480	281	311	63	234	132
2ACm300H	1 1/2"	1 1/4"						
2AC300H								
2AC400H								

Hydraulic Performance Curve



Materials Table

No.	Part	Material
1	Drain plug	HPb59-1
2	Pump body	HT200
3	Gasket	NBR
4	Impeller	HPb59-1
5	Bracket cover	HT200
6	Mechanical seal	Carbon/ceramic
7	Support	HT200
8	Oil seal	
9	Bearing	
10	Rotor	
11	Stator	
12	End plate	ZL102
13	Fan	PP
14	Fan cover	PP
15	Terminal board	PC
16	Capacitor	
17	Capacitor box	ABS



Package Information

Model	GW (Kgs)	L (mm)	W (mm)	H (mm)	Quantity (PCS/20 TEU)
2ACm110	21	430	234	274	833
2ACm150	27.5	440	254	299	636
2AC220	27.8	440	254	299	629
2ACm300H	51.9	510	318	355	337
2AC300H	51.5	510	318	355	340
2AC400H	52.4	510	318	355	334