

AJm

Self-priming Jet Pumps



Application

- It can be used to transfer clean water or other liquids similar to water in physical and chemical properties. It is suitable for lifting water from the well, sprinkling irrigation in garden, pressure boosting of running water, and supporting equipment etc.

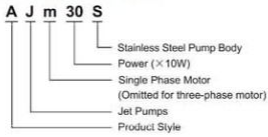
Pump

- Stainless steel pump body
- Support under special anti-rust treatment
- Stainless steel impeller
- AISI 304 shaft
- Max. liquid temperature: +40°C
- Max. suction: +9 m

Motor

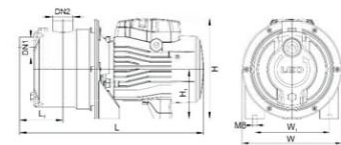
- C&U bearing
- Motor with copper winding
- Built-in thermal protector for single phase motor
- Insulation class: F
- Protection class: IPX4
- Max. ambient temperature: +40°C

Identification Codes



Technical Data

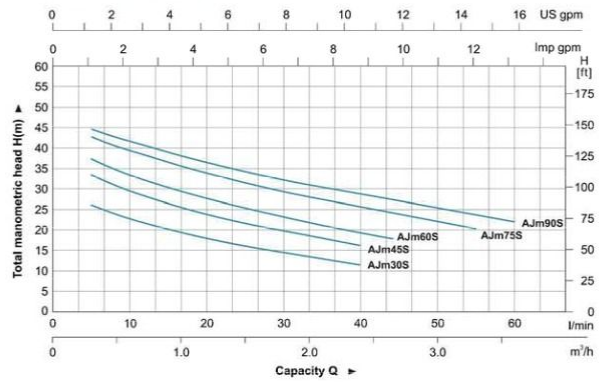
MODEL	POWER	Q (m ³ /h)											
		0.4	0.6	0.9	1.2	1.5	1.8	2.1	2.4	2.8	3.0	3.3	3.6
Single Phase	Three Phase												
AJm30S	AJ30S	0.3	0.4										
AJm45S	AJ45S	0.45	0.6										
AJm60S	AJ60S	0.6	0.8										
AJm75S	AJ75S	0.75	1.0										
AJm90S	AJ90S	0.9	1.2										



Dimension

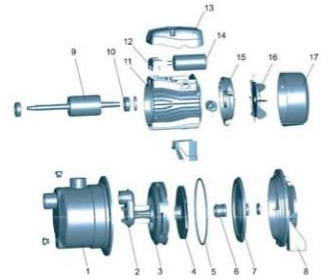
Model	DN1	DN2	L (mm)	W (mm)	H (mm)	L ₁ (mm)	W ₁ (mm)	H ₁ (mm)
AJm30S			337	180	181.5	78	140	181.5
AJm45S			337	180	181.5	78	140	181.5
AJm60S	1"	1"	376	200	214	88.5	140	214
AJm75S			376	200	214	88.5	140	214
AJm90S			376	200	214	88.5	140	214

Hydraulic Performance Curve



Materials Table

No.	Part	Material
1	Pump body	AISI 304
2	Venturi tube	PPG
3	Diffuser	PPG
4	Impeller	AISI 304
5	O-ring	NBR
6	Mechanical seal	Carbon/graphite
7	Bracket cover	AISI 304
8	Support	ZL102
9	Rotor	
10	Bearing	
11	Shaft	
12	Terminal board	PC
13	Capacitor box	ABS
14	Capacitor	
15	End plate	ZL102
16	Flan	PP
17	Fan cover	PP



Package Information

Model	GW (Kg)	L (mm)	W (mm)	H (mm)	Quantity (PC/20' TEU)
AJm30S	6.0	350	180	220	1520
AJm45S	6.9				
AJm60S	9.2				
AJm75S	10.1	420	228	257	1056
AJm90S	10.7				

Application

- It can be used to transfer clean water or other liquids similar to water in physical and chemical properties. It is suitable for lifting water from the well, sprinkling irrigation in garden, pressure boosting of running water, and supporting equipment etc.

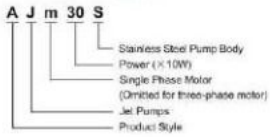
Pump

- Stainless steel pump body
- Support under special anti-rust treatment
- Stainless steel impeller
- AISI 304 shaft
- Max. liquid temperature: +40°C
- Max. suction: -0 m

Motor

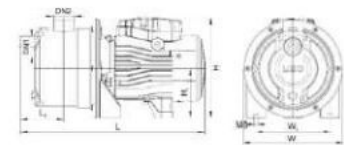
- CAU bearing
- Motor with copper winding
- Built-in thermal protector for single phase motor
- Insulation class: F
- Protection class: IPX4
- Max. ambient temperature: +40°C

Identification Codes



Technical Data

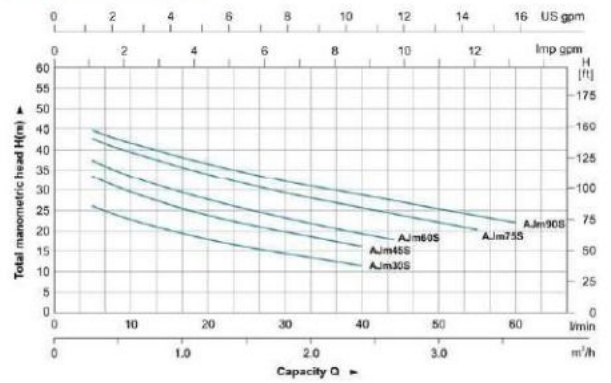
MODEL	POWER	Q (m³/h)	H (m)															
			5	6.4	7.3	8.2	9.1	10	11	12	13	14	15	16	17	18	19	20
AJm30S	0.3	0.4	33	26	23	20	18	16.5	15	13	11							
AJm45S	0.45	0.6	38	31	27	23	21	19	17	15	13							
AJm60S	0.6	0.8	43	37	33	28	25	23	21	20	18							
AJm75S	0.75	1.0	48	42	38	34	32	30	28	27	25	23	20					
AJm90S	0.9	1.2	49	44	42	39	37	35	34	31	31	29	28	25	22			



Dimension

Model	D1 (mm)	D2 (mm)	L (mm)	W (mm)	H (mm)
AJm30S	337	150	181.5	76	140
AJm45S	337	150	181.5	76	140
AJm60S	376	200	214	88.5	140
AJm75S	376	200	214	88.5	140
AJm90S	376	200	214	88.5	140

Hydraulic Performance Curve



Materials Table

No.	Part	Material
1	Pump body	AISI 304
2	Vertical shaft	PP
3	Diffuser	ABS
4	Impeller	AISI 304
5	O-ring	NBR
6	Motor shaft	Carbon Steel
7	Bracket case	AISI 304
8	Support	AISI 304
9	Motor	
10	Ring	
11	Ball	
12	Impeller nut	PP
13	Coupling nut	ABS
14	Capacitor	
15	End side	AISI 304
16	Eye	PP
17	Eye cover	PP



Package Information

Model	GW (kg)	L (mm)	W (mm)	H (mm)	Capacity (PC/Case 12.1)
AJm30S	5.0				1000
AJm45S	6.9	350	180	200	
AJm60S	9.2				
AJm75S	10.1	420	208	257	1050
AJm90S	10.2				