

# APSm

## Self-priming Peripheral Pumps

### Application

- It can be used to transfer clean water or other liquids similar to water in physical and chemical properties. It is suitable for small living water supply, automatic water sprinkler system, small air conditioner system or supporting equipment etc.

### Pump

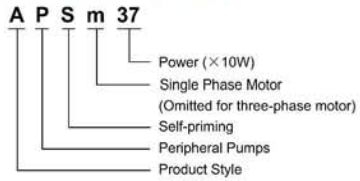
- Cast iron pump body and support under special anti-rust treatment
- Rust-free copper inserts prevent impeller's block when starting after the pump is unused for a long time
- Brass impeller with evenly arranged radial vanes
- AISI 304 shaft
- Max. liquid temperature: +60°C
- Max. suction: +9 m
- Self-priming

### Motor

- C&U bearing
- Motor with copper winding
- Built-in thermal protector for single phase motor
- Insulation class: F
- Protection class: IPX4
- Max. ambient temperature: +40°C

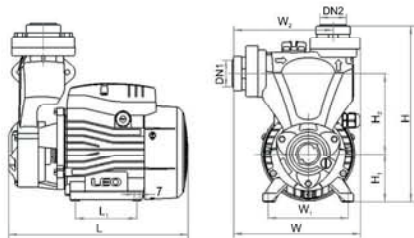


### Identification Codes



### Technical Data

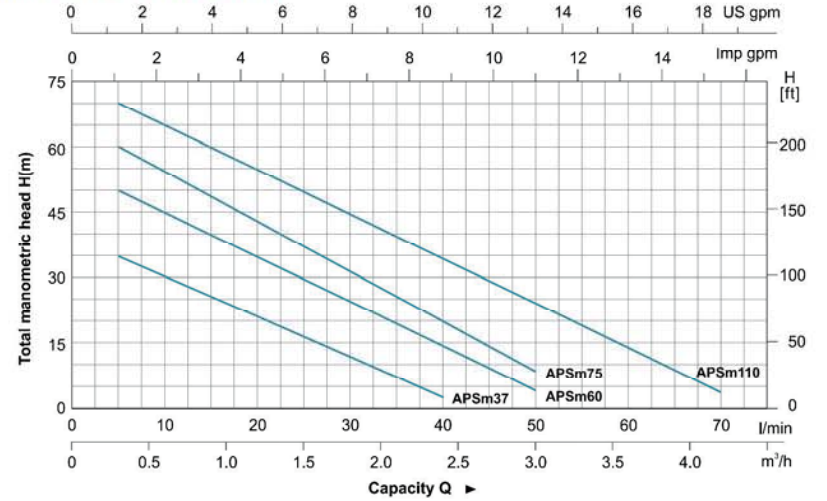
MODEL		POWER		Q (m³/h)													
Single Phase	Three Phase	kW	HP	0	0.3	0.6	0.9	1.2	1.5	1.8	2.1	2.4	3.0	3.3	3.6	4.2	
				Q (l/min)													
APSm37	APS37	0.37	0.5	40	35	28	22	18	12	5	3						
APSm60	APS60	0.6	0.8	55	50	45	38	32	28	22	18	10	5				
APSm75	APS75	0.75	1.0	65	55	50	42	40	32	28	22	18	8	5			
APSm110	APS110	1.1	1.5	75	70	65	60	55	50	40	30	25	20	15	10	5	



### Dimension

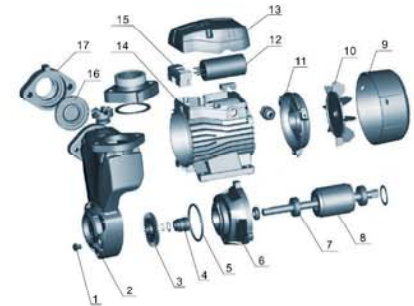
Model	DN1	DN2	L (mm)	W (mm)	H (mm)	L1 (mm)	W1 (mm)	W2 (mm)	H1 (mm)	H2 (mm)
APSm37	1"	1"	239	170	235	80	100	134	63	106
APSm60	1"	1"	260	180	257	90	112	138	71	120
APSm75	1"	1"	270	180	265	90	112	148	71	130
APSm110	1"	1"	310	200	290	100	125	155	86	138

### Hydraulic Performance Curve



### Materials Table

No.	Part	Material
1	Screw	Steel
2	Pump body	HT200
3	Impeller	ZCuZn38
4	Mechanical seal	Carbon/ceramic
5	O-ring	NBR
6	Support	HT200
7	Bearing	
8	Rotor	
9	Fan cover	PP
10	Fan	pp
11	End plate	ZL102
12	Capacitor	
13	Capacitor box	ABS
14	Stator	
15	Terminal board	PC
16	Non-return valve	NBR
17	Connector	PA6



### Package Information

Model	GW (Kgs)	L (mm)	W (mm)	H (mm)	Quantity (PCS/20 TEU)
APSm37	7.2	265	190	265	2040
APSm60	10.8	290	205	285	1736
APSm75	12.3	305	214	290	1365
APSm110	17.5	345	232	320	998

# APSm

## Automatic Self-priming Pump



### Application

- Can be used to transfer clean water or other liquids similar to water in physical and chemical properties
- Suitable for small living water supply, automatic water sprinkler system, small air conditioner system or supporting equipment etc.

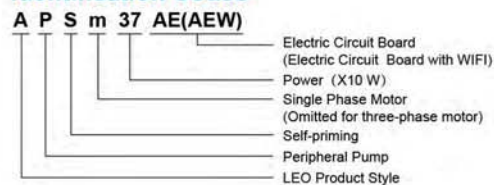
### Pump

- 3-second time delay of pump start after plugging into the socket to avoid potential danger caused by electric sparks
- Automatic stop in 6 minutes in case of no water inside
- Automatic switching to small flow control system in condition of small water flow
- Automatic 10-second operation every 120 hours for anti-block protection in case of no use for long time
- Anti-freezing in low temperature environment by automatic start and stop control to maintain the water temperature inside pump between 4°C and 60°C
- LCD screen with on/off pressure setting, operation status and malfunction alarm
- Remote monitoring and controlling by computer or mobile phone

### Motor

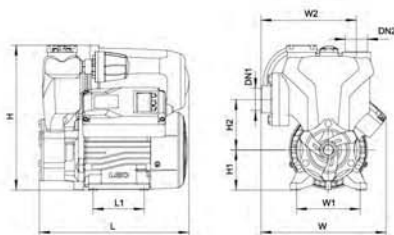
- C&U bearing
- Motor with copper winding
- Built-in thermal protector for single phase motor
- Insulation class: F
- Protection class: IPX4
- Max. ambient temperature: +40°C

### Identification Codes



### Technical Data

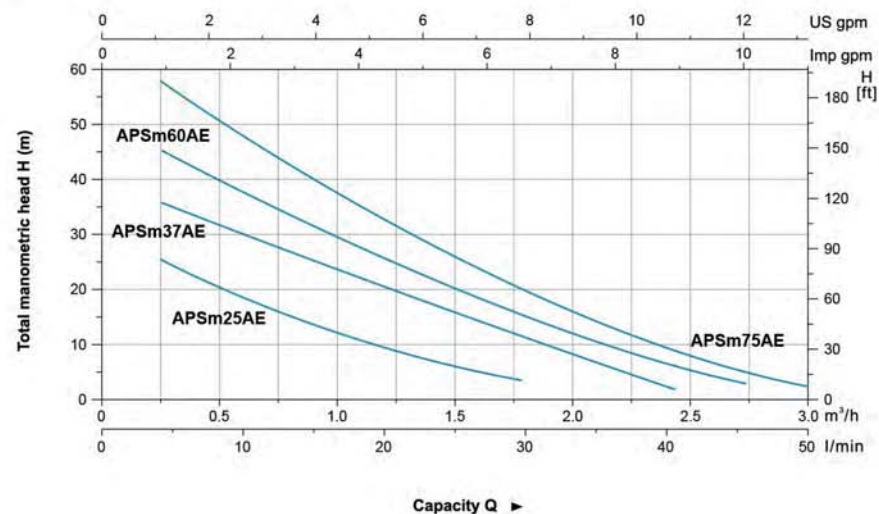
MODEL	POWER		Q (m³/h)																																																																																													
	KW	HP	0	0.3	0.6	0.9	1.2	1.5	1.8	2.1	2.4	2.7	3.0																																																																																			
APSm25AE	0.25	0.5	<table border="1"> <thead> <tr> <th rowspan="2">H (m)</th> <th colspan="13">Q (l/min)</th> </tr> <tr> <th>0</th><th>5</th><th>10</th><th>15</th><th>20</th><th>25</th><th>30</th><th>35</th><th>40</th><th>45</th><th>50</th> </tr> </thead> <tbody> <tr> <td>30</td> <td>25</td><td>20.5</td><td>15</td><td>11</td><td>7</td><td>3</td><td>-</td><td>-</td><td>-</td><td>-</td><td>-</td><td>-</td><td>-</td> </tr> <tr> <td>40</td> <td>35</td><td>30</td><td>25</td><td>20.5</td><td>16</td><td>11</td><td>7</td><td>2.5</td><td>-</td><td>-</td><td>-</td><td>-</td><td>-</td> </tr> <tr> <td>50</td> <td>45</td><td>38</td><td>31.5</td><td>25.5</td><td>20.5</td><td>15.5</td><td>11</td><td>6.5</td><td>3</td><td>-</td><td>-</td><td>-</td><td>-</td> </tr> <tr> <td>63</td> <td>58</td><td>49</td><td>41</td><td>34</td><td>27.5</td><td>22</td><td>17</td><td>12</td><td>7</td><td>3</td><td>-</td><td>-</td><td>-</td> </tr> </tbody> </table>													H (m)	Q (l/min)													0	5	10	15	20	25	30	35	40	45	50	30	25	20.5	15	11	7	3	-	-	-	-	-	-	-	40	35	30	25	20.5	16	11	7	2.5	-	-	-	-	-	50	45	38	31.5	25.5	20.5	15.5	11	6.5	3	-	-	-	-	63	58	49	41	34	27.5	22	17	12	7	3	-	-	-
H (m)	Q (l/min)																																																																																															
	0	5														10	15	20	25	30	35	40	45	50																																																																								
30	25	20.5														15	11	7	3	-	-	-	-	-	-	-																																																																						
40	35	30	25	20.5	16	11	7	2.5	-	-	-	-	-																																																																																			
50	45	38	31.5	25.5	20.5	15.5	11	6.5	3	-	-	-	-																																																																																			
63	58	49	41	34	27.5	22	17	12	7	3	-	-	-																																																																																			
APSm37AE	0.37	0.5																																																																																														
APSm60AE	0.6	0.8																																																																																														
APSm75AE	0.75	1.0																																																																																														



### Dimension

Model	DN1	DN2	L (mm)	W (mm)	H (mm)	L (mm)	W (mm)	W (mm)	H (mm)	H (mm)
APSm25AE	1"	1"	235	195	228	80	100	150	63	80
APSm37AE			235	198	228	80	100	150	63	80
APSm60AE			270	224	242	90	112	162	71	85
APSm75AE			270	224	242	90	112	162	71	85

### Hydraulic Performance Curves



### Materials Table

No.	Part	Material	No.	Part	Material
1	Pump cover	Brass	11	Pressure sensor	
2	Impeller	Brass	12	Gas tank	Iron
3	Pump body	HT200	13	Cover the lid	ABS
4	Mechanical seal	Carbon/Ceramic	14	Capacitance	
5	Support	HT200	15	Cover box	ABS
6	Bearing		16	Stator	
7	Rotor		17	Pump head	PA66
8	Fan cover	PP	18	Check-valve spring	AISI 304
9	Fan	PP	19	Check valve	PPO
10	End plate	ZL102	20	Inlet connection	HT200



### Package Information

Model	GW (Kgs)	L (mm)	W (mm)	H (mm)	Quantity (PCS/20 TEU)
APSm25AE	9.23	290	245	275	1408
APSm37AE	10.1	290	245	275	1408
APSm60AE	13.1	315	285	300	980
APSm75AE	14.06	315	285	300	980

