

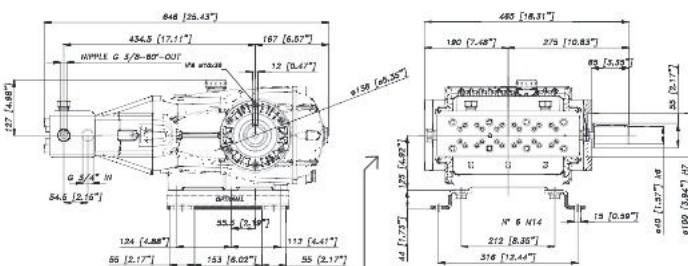
Caratteristiche - Specifications

IN	Ø	3/4" BSP
	Press. Min.	2 bar 29 psi
	Press. Max.	6 bar 87 psi
	Temp. Max.	60° C 140° F
OUT	Ø	3/8 BSP-M-60°
SHAFT	Ø	40 mm
OIL	SAE 75W 90	4 Lt 1.05 U.S.G.
WEIGHT	Kg. / lbs	91/200.6
SEALS	Type	



Applicazioni: Soluzioni complete per la pulizia delle tubazioni p.112
 Applications: Complete solutions for pipe and sewer cleaning p.112

Codice Code	Modello Model	Press Max Max Pressure		RPM 700				RPM 850				RPM 1000				Pistone Plunger Dia. mm	Corsa Stroke mm
		bar	psi	L/min	GPM	kW	HP	L/min	GPM	kW	HP	L/min	GPM	kW	HP		
74.1030.97.3	CHX 21-1000	1000	14500	15	4	29,8	39,9	18	4,8	35,8	48	21	5,5	41,7	55,9	14	50
74.1037.97.3	CHX 25-1000	1000	14500	18	4,6	34,2	45,8	21	5,5	41,1	55,1	25	6,6	47,9	64,2	15	50



**USCITA POTENZA
OUTLET POWER SOURCE**

- Accoppiamento albero uscita supplementare, per azionamento accessori (es. pompe idrauliche, pompe centrifughe, ecc.)
- Extra shaft coupling to drive accessories (for ex. hydraulic pumps, centrifugal pumps, etc.)
- Accouplement supplémentaire de l'arbre pour l'entraînement d'accessoires (par ex. pompes hydrauliques, pompes centrifuges, etc.)
- Acoplamiento eje a la salida adicional para accionar accesorios (por ejemplo bombas hidráulicas, bombas centrifugas, etc.)

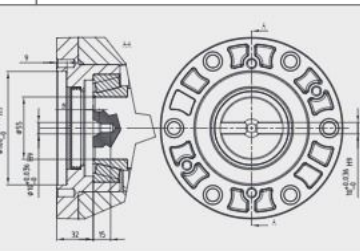


GRAFICO PRESTAZIONI - PERFORMANCE CHART

