

# AMS

## Stainless Steel Centrifugal Pump



### Application

- It is applicable to household water supply, equipment support, pipeline pressurization, garden watering, vegetable greenhouse watering, fish farming and poultry raising, industrial and mining, water supply and drainage of enterprises and high-rise buildings, central air conditioner and centralized heating circulation system, etc.

### Pump

- AISI 304 pump body
- AISI 304 shaft
- Max. liquid temperature: +85°C
- Altitude: up to 1000 m

### Motor

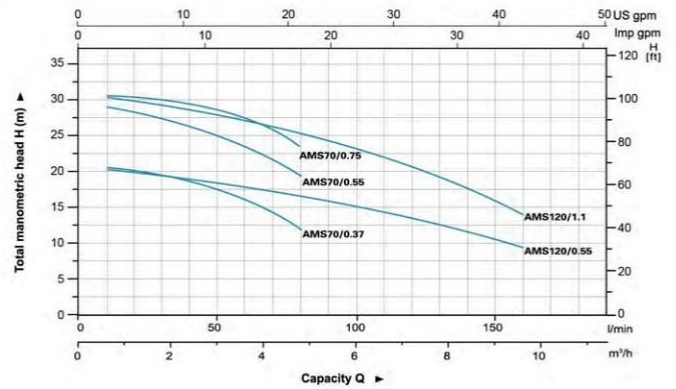
- C&U bearing
- Motor with copper winding
- Built-in thermal protector for single phase motor
- Insulation class: F
- Protection class: IPX4
- Max. temperature: +40°C

### Identification Codes

**A MS m 70 / 0.37**

- A: Rated Power (kW)
- M: Rated Flow (l/min)
- S: Single Phase Motor (Omitted for three-phase motor)
- m: Stainless Steel Centrifugal Pump
- 70: LEO Product Style
- 0.37: Rated Power (kW)

### Hydraulic Performance Curves

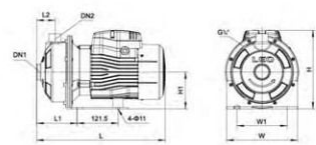
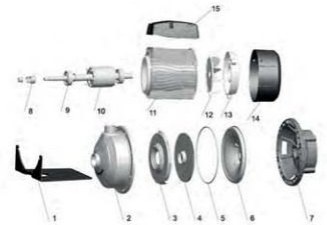


### Technical Data

MODEL	POWER	Q (m³/h)	Q (l/min)	H (m)																	
				0	1.8	2.4	3.5	4.8	6	7.2	8.4	9.6	10.8								
Single Phase	Three Phase	kW	HP	0	30	40	60	80	100	120	140	160	180								
AMS70/0.37	AMS70/0.37	0.37	0.5	20.9	19.0	18.1	15.7	12.1	-	-	-	-	-	-	-	-	-	-	-	-	-
AMS70/0.55	AMS70/0.55	0.55	0.75	29.5	27.3	26.3	23.4	19.1	-	-	-	-	-	-	-	-	-	-	-	-	-
AMS70/0.75	AMS70/0.75	0.75	1.0	30.4	28.5	27.8	26.0	23.0	-	-	-	-	-	-	-	-	-	-	-	-	-
AMS120/0.55	AMS120/0.55	0.55	0.75	20.2	-	-	17.9	16.6	15.1	13.3	11.2	8.7	-	-	-	-	-	-	-	-	-
AMS120/1.1	AMS120/1.1	1.1	1.5	30.2	-	-	26.7	25.1	23.3	21.2	19.0	16.4	-	-	-	-	-	-	-	-	-

### Materials Table

No.	Part	Material
1	Bottom support	Steel
2	Pump body	AISI 304
3	Diffuser	AISI 304
4	Impeller	AISI 304
5	Casing	ABS
6	Approval plate	AISI 304
7	Support	ZL102
8	Mechanical seal	Silicon/Carbon
9	Ball bearing	
10	Flter	
11	Spacer	
12	Fan	PP
13	Rear housing	ZL102
14	Fan cover	PP
15	Terminal box	ABS



### Dimension

Model	Ports DN1 DN2	L (mm)	W (mm)	H (mm)	L1 (mm)	L2 (mm)	W (mm)	H (mm)
AMS70/0.37	1 1/2" 1"	332	210	224	119	55	149	110
AMS70/0.55	1 1/2" 1"	332	210	224	119	55	149	110
AMS70/0.75	1 1/2" 1"	381	210	234	119	55	149	110
AMS120/0.55	1 1/2" 1"	332	210	224	119	55	149	110
AMS120/1.1	1 1/2" 1"	381	210	234	119	55	149	110

### Package Information

Model	GW (Kg)	L (mm)	W (mm)	H (mm)	Quantity (P-CE/20/1E/1)
AMS70/0.37	10	380	240	270	1200
AMS70/0.55	11	380	240	270	1200
AMS70/0.75	14	410	240	270	1104
AMS120/0.55	11	380	240	270	1200
AMS120/1.1	15	410	240	270	1104

