

CEA-CA Series

Stainless steel threaded centrifugal pumps. Wide range of pumps for domestic and industrial applications.

Single-impeller (CEA) and dual-impeller (CA) models available. "V" versions with elastomers in FPM for temperatures up to 110°C and "N" versions made entirely from AISI 316 stainless steel available on request.

Specifications

Delivery: up to 31 m³/h
 Head: up to 62 m
 Power supply: three-phase and single-phase 50 and 60 Hz
 Power: 0.37 kW to 3 kW
 Maximum operating pressure: 8 bar
 Temperature of pumped liquid:
 -10°C to +85°C (CEA-CA)
 -10°C to +110°C (CEA-V CA-V with elastomers in FPM)
 Insulation class: 155 (F)
 Protection: IP55

Materials

Pump body: Stainless steel
 Impeller: Stainless steel
 Diffuser: Stainless steel
 Seal housing: Stainless steel
 Adapter: Aluminium
 Mechanical seal:
 Ceramic/Carbon/NBR
 Fill and drain plugs:
 Stainless steel
 Elastomers: NBR

Applications

Water distribution
 Rain water collection
 Industrial washing equipment
 Pressure boosting
 General industry
 Irrigation
 Water treatment
 Cooling and chilling
 Swimming pools ("N" versions)
 Heat recovery
 Heating, ventilation and air-conditioning



For a complete list of technical information, consult www.lowara.com

CEA-CEA(N) SERIES Hydraulic performance table ~2850 rpm 50 Hz

| PUMP TYPE | RATED POWER | | Q = DELIVERY | | | | | | | | | | | | | | | | | |
|---------------------------------------|-------------|------|-------------------|------|------|------|------|------|------|------|------|------|------|------|------|------|------|------|------|------|
| | kW | HP | l/min | 30 | 40 | 60 | 80 | 100 | 120 | 140 | 160 | 180 | 200 | 250 | 300 | 350 | 400 | 430 | 480 | 520 |
| | | | m ³ /h | 0 | 1,8 | 2,4 | 3,6 | 4,8 | 6 | 7,2 | 8,4 | 9,6 | 10,8 | 12 | 15 | 18 | 21 | 24 | 26 | 29 |
| H = TOTAL HEAD METRES COLUMN OF WATER | | | | | | | | | | | | | | | | | | | | |
| CEA(M) 70/3 | 0,37 | 0,5 | 22 | 20,1 | 19,1 | 16,6 | 12,8 | | | | | | | | | | | | | |
| CEA(M) 70/5 | 0,55 | 0,75 | 31,1 | 28,8 | 27,7 | 24,7 | 20,2 | | | | | | | | | | | | | |
| CEA(M) 80/5 | 0,75 | 1 | 32 | 30 | 29,3 | 27,4 | 24,7 | 21 | | | | | | | | | | | | |
| CEA(M) 120/3 | 0,55 | 0,75 | 22,4 | | | 18,9 | 17,5 | 15,9 | 14 | 11,8 | 9,2 | | | | | | | | | |
| CEA(M) 120/5 | 0,9 | 1,2 | 31,8 | | | 28,2 | 26,5 | 24,6 | 22,4 | 20 | 17,3 | | | | | | | | | |
| CEA(M) 210/2 | 0,75 | 1 | 17,7 | | | | | | 16,5 | 16,1 | 15,6 | 15 | 14,4 | 12,6 | 10,4 | | | | | |
| CEA(M) 210/3 | 1,1 | 1,5 | 20,8 | | | | | | 19,7 | 19,3 | 19 | 18,5 | 18 | 16,5 | 14,4 | | | | | |
| CEA(M) 210/4 | 1,5 | 2 | 25,5 | | | | | | 24,8 | 24,5 | 24 | 23,6 | 23 | 21,3 | 19 | | | | | |
| CEA(M) 210/5 | 1,85 | 2,5 | 29 | | | | | | 28,2 | 27,9 | 27,5 | 27,1 | 26,6 | 25,1 | 23,1 | | | | | |
| CEA(M) 370/1 | 1,1 | 1,5 | 16,3 | | | | | | | | | 15,5 | 15,2 | 14,3 | 13 | 11,4 | 9,4 | 8,1 | | |
| CEA(M) 370/2 | 1,5 | 2 | 20,4 | | | | | | | | | | 19,1 | 18,3 | 17,2 | 15,8 | 14,1 | 13 | 10,8 | |
| CEA(M) 370/3 | 1,85 | 2,5 | 24,4 | | | | | | | | | | 22,9 | 22,1 | 21,1 | 19,8 | 18,2 | 17,1 | 15 | 13 |
| CEA370/5 | 3 | 4 | 30,3 | | | | | | | | | | 28,3 | 27,5 | 26,5 | 25,3 | 23,8 | 22,8 | 21 | 19,0 |

cea-2p50-en_d_th

Electrical data

| PUMP TYPE | MOTOR TYPE | INP POWER* | INPUT CURRENT* 220-240 V | CAPACIT. μF / 450 V | PUMP TYPE | MOTOR TYPE | INPUT POWER* | INPUT CURRENT* 220-240 V | INPUT CURRENT* 380-415 V |
|-----------|--------------|------------|-----------------------------|------------------------|-----------|--------------|--------------|-----------------------------|-----------------------------|
| | | | | | | | | | |
| | | kW | A | | | | kW | A | A |
| CEAM70/3 | SM63BG/1045 | 0,60 | 2,72 | 14 | CEA70/3 | SM63BG/304 | 0,61 | 2,51 | 1,45 |
| CEAM70/5 | SM71BG/1055 | 0,97 | 4,55 | 16 | CEA70/5 | SM71BG/305 | 0,88 | 2,86 | 1,65 |
| CEAM80/5 | SM71BG/1075 | 1,07 | 4,87 | 20 | CEA80/5 | SM80BG/307HE | 1,02 | 3,23 | 1,87 |
| CEAM120/3 | SM71BG/1055 | 0,91 | 4,33 | 16 | CEA120/3 | SM71BG/305 | 0,82 | 2,74 | 1,58 |
| CEAM120/5 | SM71BG/1095 | 1,39 | 6,24 | 25 | CEA120/5 | SM80BG/311HE | 1,32 | 4,07 | 2,35 |
| CEAM210/2 | SM71BG/1075 | 1,13 | 5,10 | 20 | CEA210/2 | SM80BG/307HE | 1,10 | 3,39 | 1,96 |
| CEAM210/3 | SM80BG/1115 | 1,48 | 6,68 | 30 | CEA210/3 | SM80BG/311HE | 1,39 | 4,24 | 2,45 |
| CEAM210/4 | SM80BG/1155 | 1,91 | 8,60 | 40 | CEA210/4 | PLM90BG/315 | 1,77 | 5,33 | 3,08 |
| CEAM210/5 | PLM90BG/1225 | 2,24 | 10,2 | 70 | CEA210/5 | PLM90BG/322 | 2,20 | 7,35 | 4,24 |
| CEAM370/1 | SM80BG/1115 | 1,49 | 6,75 | 30 | CEA370/1 | SM80BG/311HE | 1,44 | 4,34 | 2,51 |
| CEAM370/2 | SM80BG/1155 | 2,05 | 9,26 | 40 | CEA370/2 | PLM90BG/315 | 1,99 | 5,90 | 3,41 |
| CEAM370/3 | PLM90BG/1225 | 2,45 | 11,1 | 70 | CEA370/3 | PLM90BG/322 | 2,45 | 7,84 | 4,53 |
| | | | | | CEA370/5 | PLM90BG/330 | 3,26 | 10,1 | 5,86 |

*Maximum value in specified range.

cea-2p50-en_e_te

CA-CA(N) SERIES

Hydraulic performance table ~2850 rpm 50 Hz

| PUMP TYPE | RATED POWER | | Q = DELIVERY | | | | | | | | | | | | |
|---------------------------------------|-------------|-----|-------------------|------|------|------|------|------|------|------|------|------|------|------|------|
| | | | l/min | 0 | 30 | 40 | 50 | 60 | 70 | 80 | 100 | 120 | 150 | 180 | 210 |
| | kw | HP | m ³ /h | 0 | 1,8 | 2,4 | 3 | 3,6 | 4,2 | 4,8 | 6 | 7,2 | 9 | 10,8 | 12,6 |
| H = TOTAL HEAD METRES COLUMN OF WATER | | | | | | | | | | | | | | | |
| CA(M) 70/33 | 0,75 | 1 | 42,9 | 38,8 | 36,9 | 34,6 | 31,7 | 28,2 | 23,9 | | | | | | |
| CA(M) 70/34 | 0,9 | 1,2 | 48,8 | 45,1 | 43,2 | 40,7 | 37,7 | 34,0 | 29,5 | | | | | | |
| CA(M) 70/45 | 1,1 | 1,5 | 56,2 | 52,0 | 49,8 | 47,1 | 43,9 | 39,9 | 35,3 | | | | | | |
| CA(M) 120/33 | 1,1 | 1,5 | 44,3 | | | 39,1 | 37,8 | 36,4 | 34,8 | 31,4 | 27,6 | 21,0 | | | |
| CA(M) 120/35 | 1,5 | 2 | 54,0 | | | 49,4 | 48,1 | 46,6 | 44,9 | 41,2 | 36,8 | 29,3 | | | |
| CA(M) 120/55 | 2,2 | 3 | 63,8 | | | 59,6 | 58,2 | 56,6 | 54,8 | 50,6 | 45,7 | 37,1 | | | |
| CA(M) 200/33 | 1,85 | 2,5 | 43,2 | | | 41,8 | 41,2 | 40,6 | 39,9 | 38,3 | 36,4 | 33,2 | 29,5 | 25,5 | |
| CA(M) 200/35 | 2,2 | 3 | 53,5 | | | 52,4 | 51,9 | 51,4 | 50,7 | 49,2 | 47,5 | 44,3 | 40,6 | 36,5 | |
| CA 200/55 | 3 | 4 | 62,6 | | | 61,0 | 60,6 | 60,1 | 59,5 | 58,2 | 56,6 | 53,8 | 50,4 | 46,2 | |

ca-2p50-en_d_th

Electrical data

| PUMP TYPE | MOTOR TYPE | INPUT POWER* | INPUT CURRENT* 220-240 V | CAPACIT. μF / 450 V | PUMP TYPE | MOTOR TYPE | INPUT POWER* | INPUT CURRENT* 220-240 V | INPUT CURRENT* 380-415 V |
|-----------|--------------|--------------|-----------------------------|----------------------------|-----------|--------------|--------------|-----------------------------|-----------------------------|
| | | | | | | | | | |
| | | kw | A | | | | kw | A | A |
| CAM70/33 | SM71CA/1075 | 1,15 | 5,16 | 20 | CA70/33 | SM80CA/307HE | 1,11 | 3,43 | 1,98 |
| CAM70/34 | SM71CA/1095 | 1,39 | 6,22 | 25 | CA70/34 | SM80CA/311HE | 1,32 | 4,05 | 2,34 |
| CAM70/45 | SM80CA/1115 | 1,76 | 7,92 | 30 | CA70/45 | SM80CA/311HE | 1,67 | 4,95 | 2,86 |
| CAM120/33 | SM80CA/1115 | 1,67 | 7,53 | 30 | CA120/33 | SM80CA/311HE | 1,58 | 4,72 | 2,73 |
| CAM120/35 | SM80CA/1155 | 2,18 | 9,87 | 40 | CA120/35 | LLM90CA/315 | 1,99 | 5,85 | 3,38 |
| CAM120/55 | PLM90CA/1225 | 2,54 | 11,5 | 70 | CA120/55 | LLM90CA/322 | 2,47 | 7,40 | 4,28 |
| CAM200/33 | PLM90CA/1225 | 2,29 | 10,4 | 70 | CA200/33 | LLM90CA/322 | 2,18 | 6,71 | 3,88 |
| CAM200/35 | PLM90CA/1225 | 2,94 | 12,6 | 70 | CA200/35 | LLM90CA/322 | 2,97 | 8,86 | 5,12 |
| - | - | - | - | - | CA200/55 | LLM90CA/330 | 3,52 | 10,7 | 6,19 |

*Maximum value in specified range.

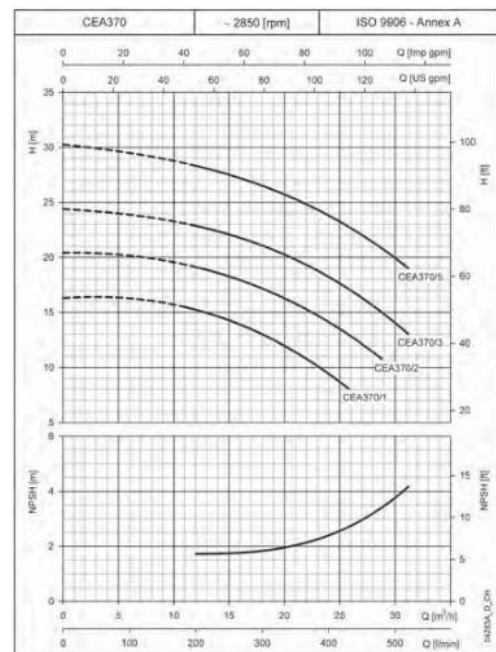
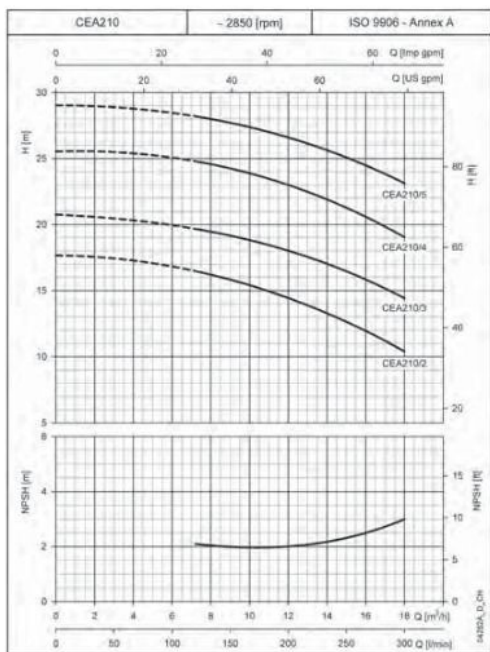
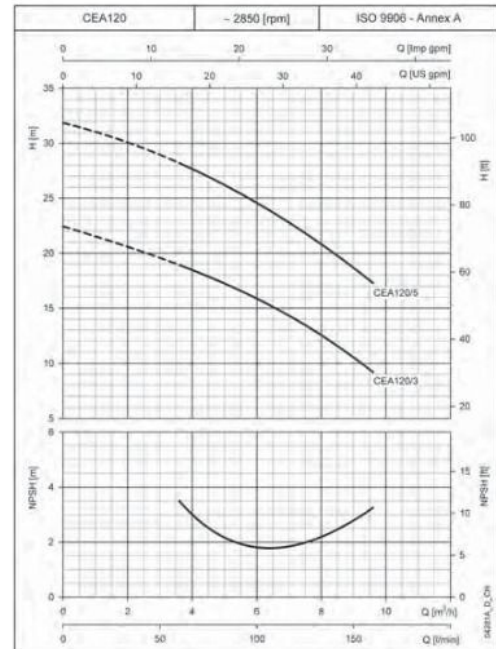
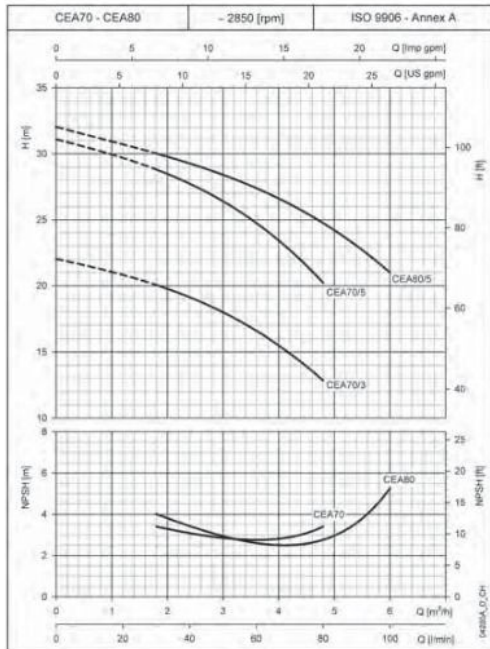
ca-2p50-en_d_te

Black and white technical books available

see www.lowara.it

CEA SERIES

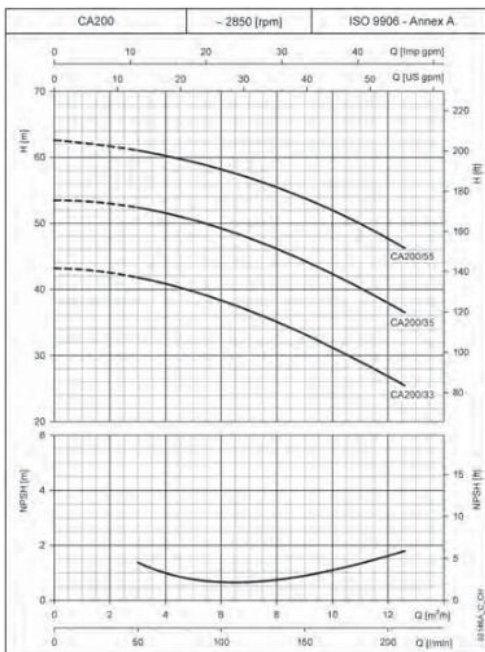
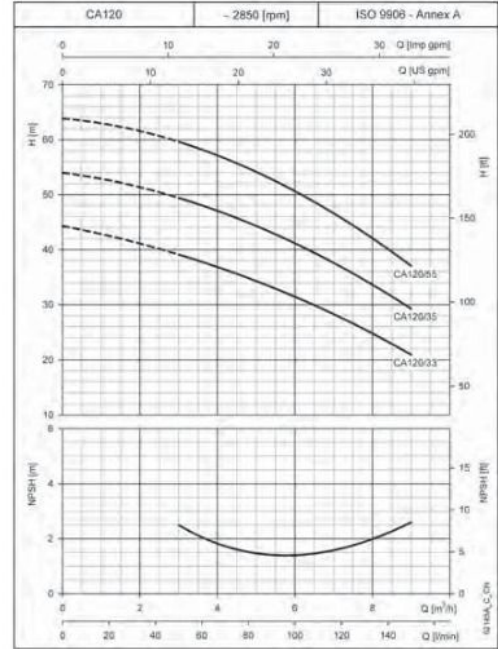
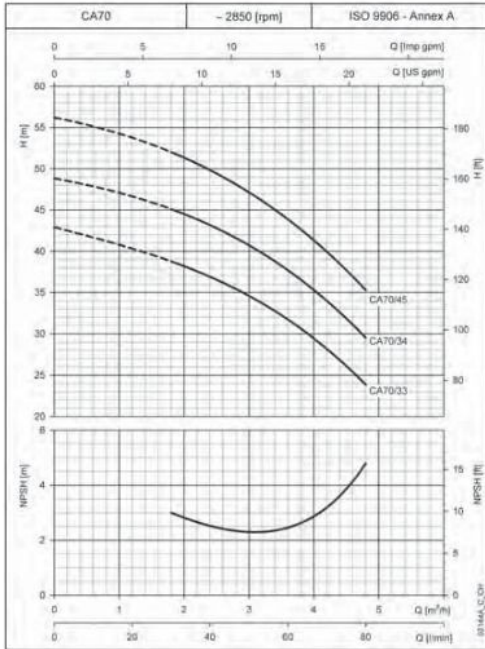
Operating characteristics at 50 Hz



These performances are valid for liquids with density $\rho = 1.0 \text{ kg/dm}^3$ and kinematic viscosity $\nu = 1 \text{ mm}^2/\text{s}$.

CA SERIES

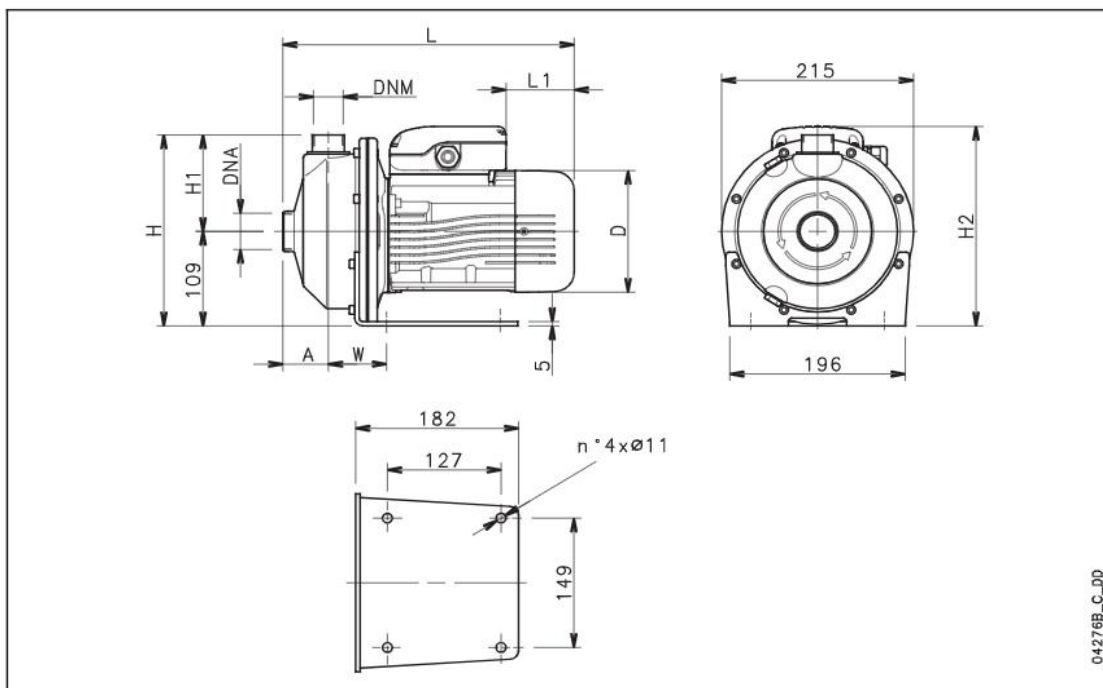
Operating characteristics at 50 Hz



These performances are valid for liquids with density $\rho = 1.0 \text{ kg/dm}^3$ and kinematic viscosity $\nu = 1 \text{ mm}^2/\text{s}$.

CEA-CEA(N) SERIES

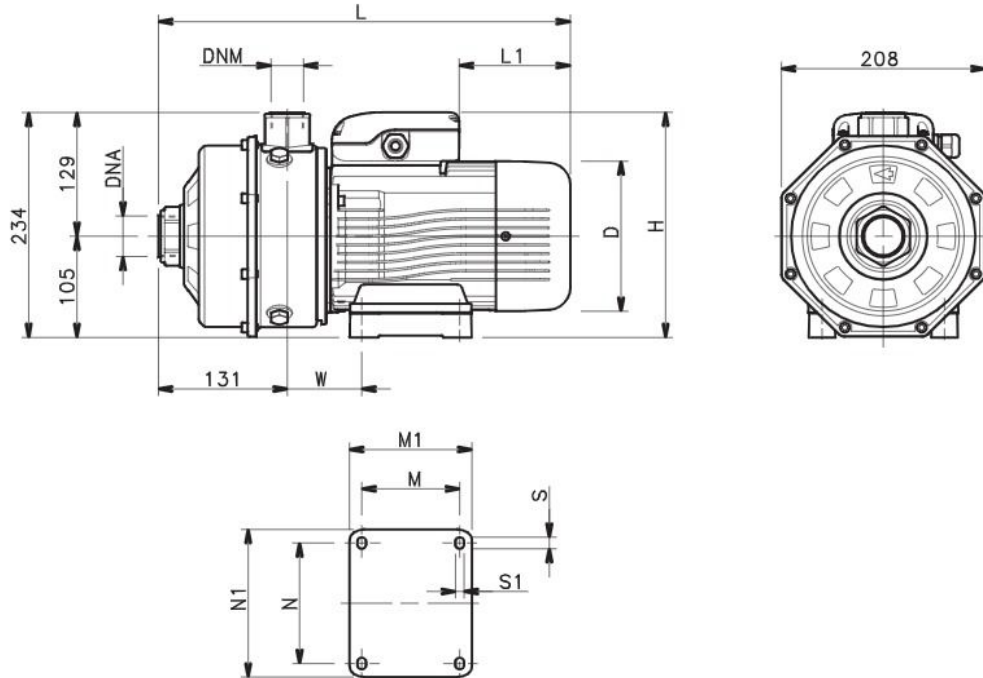
Dimensions and weights



| PUMP TYPE | DIMENSIONS (mm) | | | | | | | | DNA | DNM | WEIGHT kg |
|------------|-----------------|-----|-----|-----|-----|-----|-----|----|--------|--------|--------------|
| | A | D | H | H1 | H2 | L | L1 | W | | | |
| CEAM 70/3 | 51 | 120 | 220 | 111 | 220 | 311 | 62 | 65 | Rp 1/4 | Rp 1 | 9,7 |
| CEAM 70/5 | 51 | 140 | 220 | 111 | 230 | 325 | 76 | 65 | Rp 1/4 | Rp 1 | 11,6 |
| CEAM 80/5 | 51 | 140 | 220 | 111 | 230 | 325 | 76 | 65 | Rp 1/4 | Rp 1 | 12,5 |
| CEAM 120/3 | 51 | 140 | 220 | 111 | 230 | 325 | 76 | 65 | Rp 1/4 | Rp 1 | 11,5 |
| CEAM 120/5 | 51 | 140 | 220 | 111 | 239 | 325 | 31 | 65 | Rp 1/4 | Rp 1 | 13 |
| CEAM 210/2 | 54 | 140 | 222 | 113 | 230 | 339 | 76 | 76 | Rp 1/2 | Rp 1/4 | 13 |
| CEAM 210/3 | 54 | 156 | 222 | 113 | 246 | 385 | 69 | 76 | Rp 1/2 | Rp 1/4 | 14,5 |
| CEAM 210/4 | 54 | 156 | 222 | 113 | 246 | 385 | 69 | 76 | Rp 1/2 | Rp 1/4 | 16,1 |
| CEAM 210/5 | 54 | 174 | 222 | 113 | 243 | 429 | 84 | 76 | Rp 1/2 | Rp 1/4 | 17 |
| CEAM 370/1 | 54 | 156 | 222 | 113 | 246 | 385 | 69 | 76 | Rp 2 | Rp 1/4 | 14 |
| CEAM 370/2 | 54 | 156 | 222 | 113 | 246 | 385 | 69 | 76 | Rp 2 | Rp 1/4 | 16,1 |
| CEAM 370/3 | 54 | 174 | 222 | 113 | 243 | 429 | 84 | 76 | Rp 2 | Rp 1/4 | 20 |
| CEA 70/3 | 51 | 120 | 220 | 111 | 220 | 311 | 62 | 65 | Rp 1/4 | Rp 1 | 9,7 |
| CEA 70/5 | 51 | 140 | 220 | 111 | 230 | 325 | 76 | 65 | Rp 1/4 | Rp 1 | 11,6 |
| CEA 80/5 | 51 | 155 | 220 | 111 | 238 | 371 | 114 | 65 | Rp 1/4 | Rp 1 | 15,8 |
| CEA 120/3 | 51 | 140 | 220 | 111 | 230 | 325 | 76 | 65 | Rp 1/4 | Rp 1 | 11,5 |
| CEA 120/5 | 51 | 155 | 220 | 111 | 238 | 371 | 114 | 65 | Rp 1/4 | Rp 1 | 16 |
| CEA 210/2 | 54 | 155 | 222 | 113 | 238 | 385 | 114 | 76 | Rp 1/2 | Rp 1/4 | 16 |
| CEA 210/3 | 54 | 155 | 222 | 113 | 238 | 385 | 114 | 76 | Rp 1/2 | Rp 1/4 | 17,8 |
| CEA 210/4 | 54 | 174 | 222 | 113 | 243 | 429 | 172 | 76 | Rp 1/2 | Rp 1/4 | 21 |
| CEA 210/5 | 54 | 174 | 222 | 113 | 243 | 429 | 172 | 76 | Rp 1/2 | Rp 1/4 | 21 |
| CEA 370/1 | 54 | 155 | 222 | 113 | 238 | 385 | 114 | 76 | Rp 2 | Rp 1/4 | 17 |
| CEA 370/2 | 54 | 174 | 222 | 113 | 243 | 429 | 172 | 76 | Rp 2 | Rp 1/4 | 21 |
| CEA 370/3 | 54 | 174 | 222 | 113 | 243 | 429 | 172 | 76 | Rp 2 | Rp 1/4 | 21 |
| CEA 370/5 | 54 | 174 | 222 | 113 | 243 | 429 | 172 | 76 | Rp 2 | Rp 1/4 | 21 |

cea-2p50-en f.td

CA-CA(N) SERIES Dimensions and weights



0214.3B_B_DD

| PUMP TYPE | DIMENSIONS (mm) | | | | | | | | | | | DNA | DNM | WEIGHT |
|------------|-----------------|-----|-----|-----|-----|-----|-----|-----|----|----|----|-------|------|--------|
| | D | H | L | L1 | M | M1 | N | N1 | S | S1 | W | | | |
| CAM 70/33 | 140 | 226 | 383 | 76 | 90 | 113 | 112 | 135 | 12 | 7 | 66 | Rp 1¼ | Rp 1 | 15 |
| CAM 70/34 | 140 | 235 | 383 | 31 | 90 | 113 | 112 | 135 | 12 | 7 | 66 | Rp 1¼ | Rp 1 | 15,8 |
| CAM 70/45 | 156 | 242 | 420 | 69 | 100 | 125 | 125 | 153 | 12 | 9 | 76 | Rp 1¼ | Rp 1 | 18,5 |
| CAM 120/33 | 156 | 242 | 420 | 69 | 100 | 125 | 125 | 153 | 12 | 9 | 76 | Rp 1¼ | Rp 1 | 18,4 |
| CAM 120/35 | 156 | 242 | 420 | 69 | 100 | 125 | 125 | 153 | 12 | 9 | 76 | Rp 1¼ | Rp 1 | 20,2 |
| CAM 120/55 | 174 | 239 | 454 | 84 | 125 | 155 | 140 | 170 | 13 | 10 | 98 | Rp 1¼ | Rp 1 | 27 |
| CAM 200/33 | 174 | 239 | 454 | 84 | 125 | 155 | 140 | 170 | 13 | 10 | 98 | Rp 1½ | Rp 1 | 27 |
| CAM 200/35 | 174 | 239 | 454 | 84 | 125 | 155 | 140 | 170 | 13 | 10 | 98 | Rp 1½ | Rp 1 | 27 |
| CA 70/33 | 155 | 234 | 420 | 114 | 100 | 125 | 125 | 153 | 12 | 9 | 76 | Rp 1¼ | Rp 1 | 18 |
| CA 70/34 | 155 | 234 | 420 | 114 | 100 | 125 | 125 | 153 | 12 | 9 | 76 | Rp 1¼ | Rp 1 | 19 |
| CA 70/45 | 155 | 234 | 420 | 114 | 100 | 125 | 125 | 153 | 12 | 9 | 76 | Rp 1¼ | Rp 1 | 20 |
| CA 120/33 | 155 | 234 | 420 | 114 | 100 | 125 | 125 | 153 | 12 | 9 | 76 | Rp 1¼ | Rp 1 | 20 |
| CA120/35 | 178 | 242 | 433 | 125 | 125 | 150 | 140 | 170 | 13 | 10 | 98 | Rp 1¼ | Rp 1 | 22,5 |
| CA 120/55 | 178 | 242 | 433 | 125 | 125 | 150 | 140 | 170 | 13 | 10 | 98 | Rp 1¼ | Rp 1 | 24 |
| CA 200/33 | 178 | 242 | 433 | 125 | 125 | 150 | 140 | 170 | 13 | 10 | 98 | Rp 1½ | Rp 1 | 24 |
| CA 200/35 | 178 | 242 | 433 | 125 | 125 | 150 | 140 | 170 | 13 | 10 | 98 | Rp 1½ | Rp 1 | 24 |
| CA 200/55 | 178 | 242 | 453 | 145 | 125 | 150 | 140 | 170 | 13 | 10 | 98 | Rp 1½ | Rp 1 | 26 |

ca-2p50_g_td