

► Our technology. Your success.

Pumps • Valves • Service



CPKN – Standardised Chemical Pump to EN 22858 / ISO 2858/ ISO 5199



Applications:

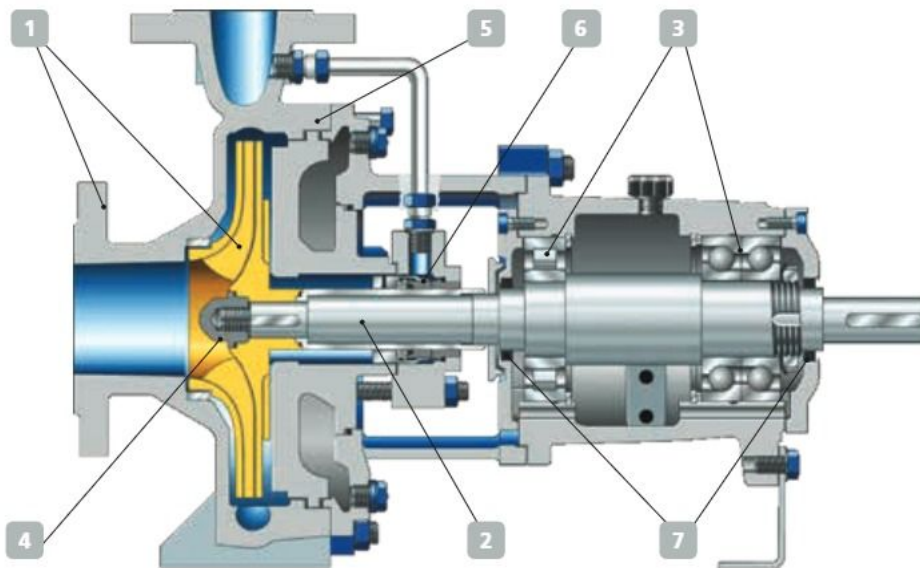
Handling aggressive organic and inorganic fluids in the Chemical and petrochemical industries

- Process engineering
- Sugar industry
- Biodiesel, bioethanol
- Seawater desalination
- Reverse osmosis
- Fire-fighting water
- Condensate
- Hot water
- Brine
- Oils
- Cleaning agents
- Steel industry
- Heat transfer fluids

More information:

www.ksb.com/products

CPKN – Standardised Chemical Pump to EN 22858 / ISO 2858 / ISO 5199



1 To standard

Dimensions and ratings to ISO 2858 / ISO 5199.
Complementary sizes up to nominal discharge nozzle diameter DN 400

2 Longer service life

of the mechanical seal achieved by rigid shaft with low shaft deflection

3 Service-friendly

Maintenance made easy by back pull-out design and small spare parts stocks

4 Straightforward and safe installation

Impeller fastening with metal-to-metal contact

5 Reliable operation

Robust bearings and shaft

6 Large range of variants

Available with all seal variants, including cartridge, gland packing or basic seals, single or double seals, with or without quench, etc.

7 Flexible

Sealed by lip seal, optionally also labyrinth or deflectors

Material variants

Nodular cast iron	JS1025
Cast steel	GP240GN+H
Stainless steel	1.4408
Duplex	1.4593
Special materials	Large range on request, for example super duplex, titanium, etc.

Technical data

Flow rate	4,150 m ³ /h (1,150 l/s)
Head	185 m max.
Sizes DN	250-400 to 400-710
Operating pressure	25 bar max.
Operating temperature	-40 to +400 °C
Speed	3,500 rpm max.



KSB SE & Co. KGaA
Johann-Klein-Straße 9
67227 Frankenthal (Germany)
www.ksb.com