

# TLCH Series

2

In-line wet rotor circulators for light commercial systems, fixed speed with manual adjustment.

## Specifications

Delivery: up to 12 m<sup>3</sup>/h  
Head: up to 12 m  
Power supply: single-phase 50 Hz  
Maximum power: 260 W to 400 W  
Maximum operating pressure: 10 bar  
Temperature of pumped liquid:  
-10°C to +110°C  
Insulation class: H  
Protection: IP44

## Materials

Pump body: Cast iron cataphoretically coated  
Impeller: Composite material  
Shaft: Ceramic  
Lower sleeve: Stainless steel  
Bearings: Ceramic  
Elastomers: EPDM

## Applications

Water circulation in heating and air-conditioning systems for high head/high flow

Pumping of chemically and mechanically non-aggressive hot or cold water



For a complete list of technical information, consult [www.lowara.com](http://www.lowara.com)

## TLCH SERIES Hydraulic performance table

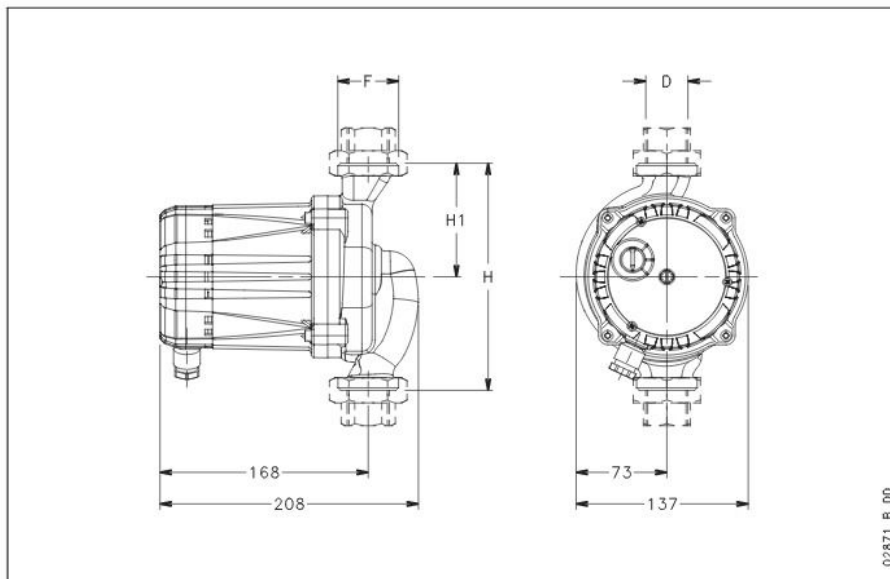
PUMP TYPE	MAXIMUM ABSORBED POWER W	MAXIMUM ABSORBED CURRENT A	CAPACITOR		SPEED	Q = DELIVERY														
			$\mu F$	V		m <sup>3</sup> /h														
						0,3	0,7	1,0	1,3	1,7	2,0	2,3	2,7							
230V 50Hz											H = TOTAL HEAD METRES COLUMN OF WATER									
TLCH 25-7L	220	1,03	8,0	400	1	5,8	5,1	4,2	3,1	1,9	1,1									
TLCH 32-7L	228	1,04			2	6,7	6,2	5,4	4,4	3,3	2,2	1,2								
	260	1,13			3	7,1	6,7	6,1	5,2	4,2	3,2	2,3	1,4							
TLCH 25-8L	260	1,23	8,0	400	1	6,6	5,9	4,7	3,1	1,8	0,8									
TLCH 32-8L	270	1,24			2	7,5	7,0	6,2	5,1	3,9	2,7	1,7								
	286	1,25			3	8,0	7,6	6,9	5,9	4,8	3,7	2,7	1,7							
TLCH 25-10L	283	1,35	8,0	400	1	8,3	7,0	5,0	2,7	1,1										
TLCH 32-10L	343	1,44			2	9,4	8,7	7,7	6,3	4,6	3,1	1,7								
	357	1,56			3	10,0	9,5	8,8	7,7	6,5	5,1	3,8	2,6	1,5						
TLCH 25-12L	285	1,36	8,0	400	1	7,8	6,5	4,5	2,2	0,7										
TLCH 32-12L	372	1,69			2	10,4	9,6	8,5	6,9	5,2	3,4	1,9								
	400	1,73			3	11,9	11,2	10,3	9,2	7,7	6,2	4,7	3,3	2,0						

Performances according to standards ISO 9906 - Annex A.

t1ch-2p50-en\_c\_th

2

## TLCH SERIES Dimensions and weights



02871\_LB\_D0

## TLCH SERIES Dimensions and weights table

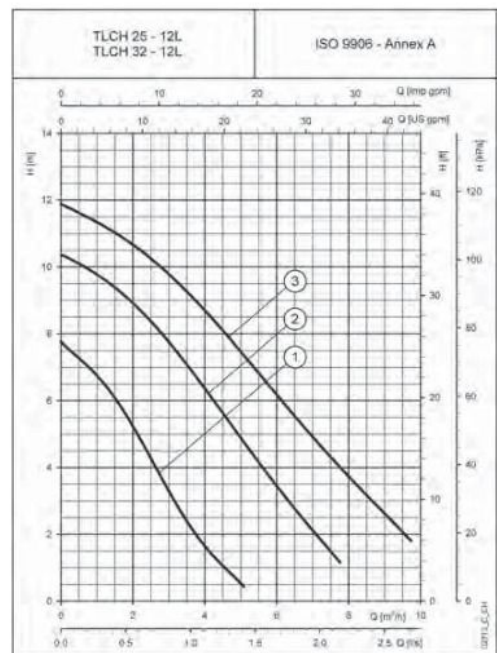
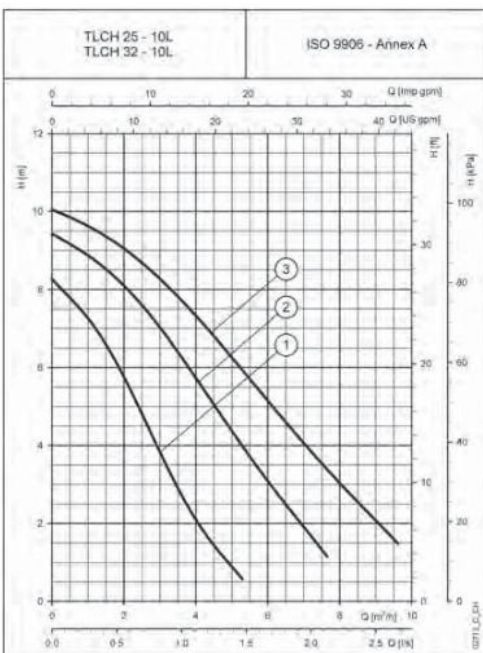
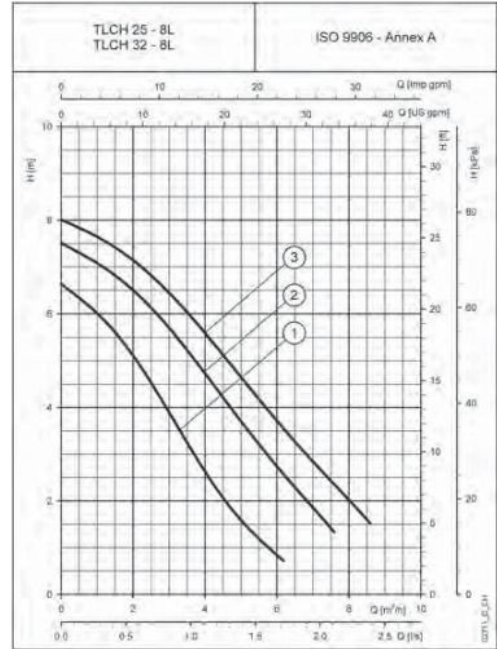
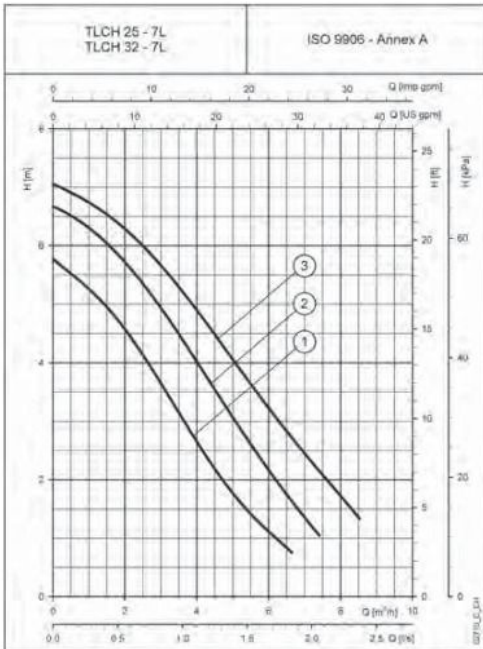
PUMP TYPE	DIMENSIONS (mm)					WEIGHT kg
	H	H1	D	F	DN	
TLCH 25-7L	180	90	1"	G 1 <sup>1</sup> / <sub>2</sub>	25	6,5
TLCH 32-7L	180	90	1 <sup>1</sup> / <sub>4</sub> "	G 2"	32	6,6
TLCH 25-8L	180	90	1"	G 1 <sup>1</sup> / <sub>2</sub>	25	6,5
TLCH 32-8L	180	90	1 <sup>1</sup> / <sub>4</sub> "	G 2"	32	6,6
TLCH 25-10L	180	90	1"	G 1 <sup>1</sup> / <sub>2</sub>	25	6,5
TLCH 32-10L	180	90	1 <sup>1</sup> / <sub>4</sub> "	G 2"	32	6,6
TLCH 25-12L	180	90	1"	G 1 <sup>1</sup> / <sub>2</sub>	25	6,5
TLCH 32-12L	180	90	1 <sup>1</sup> / <sub>4</sub> "	G 2"	32	6,6

t1ch-2p50-en\_c\_td

# TLCH SERIES

## Single-phase operating characteristics

2



These performances are valid for liquids with density  $\rho = 1.0 \text{ kg/dm}^3$  and kinematic viscosity  $\nu = 1 \text{ mm}^2/\text{s}$ .