



Application

- Suitable for transferring liquids of low viscosity, non-inflammable and non-explosive, not containing solid particles or fibers.
- Water supply & drainage for high-rise buildings, filtration and transfer at waterworks, pressure boosting in main pipe.
- Washing and cleaning systems, boiler feeding, cooling water circulation, water treatment systems, auxiliary system, support equipment.
- Ultra-filtration systems, reverse-osmosis systems.

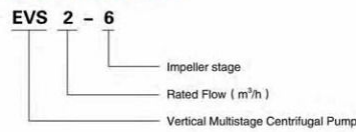
Pump

- AISI304 Impeller, diffuser, barrel
- Stainless steel welded shaft
- Liquid temperature range: +4°C ~ +60°C
- Cast iron water inlet and outlet with special anti-rust treatment
- Liquid PH value: 6.5 - 8.5
- Max operation pressure: 15 bar
- Altitude: up to 1000 m
- C&U bearing

Motor

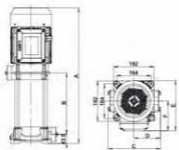
- Motor with copper winding
- Insulation class: F
- Protection class: IP55
- Max. ambient temperature: 40°C

Identification Codes



Technical Data

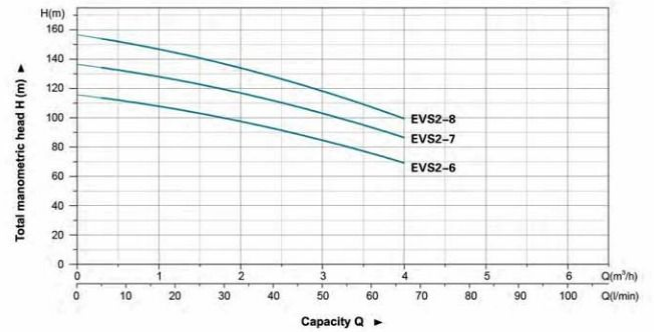
Model	Power		Q(m ³ /h) Q(l/min)	H(m)	Q (l/min)			
	kW	HP			0	1	2	3
EVS2-6	2.2	3.0	H(m)	116	107	98	85	69
EVS2-7	3.0	4.0		137	127	117	104	86
EVS2-8	3.0	4.0		157	146	134	119	99



Dimension

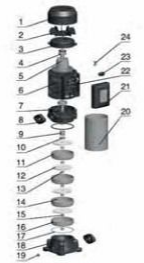
Model	A	B	C	D	E	F	Inlet	Outlet
EVS2-6	587	241.5	248	126.5	230	134	G1	G1
EVS2-7	612	266.5	248	126.5	230	134	G1	G1
EVS2-8	637	291.5	248	126.5	230	134	G1	G1

Hydraulic Performance Curves



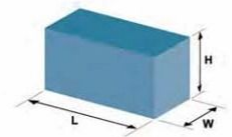
Materials Table

No.	Part	Material	No.	Part	Material
1	Fan cover	GGP	16	Primary diffuser	AISI 304
2	Fan	PP	17	O-ring	NBR
3	Rear cover	Cast iron	18	Base	Cast iron
4	Bearing		19	Drainage plug	
5	Rotor		20	Barrel	AISI 304
6	Stator		21	Terminal box	ABS
7	Motor base	Cast iron	22	Wiring base	
8	Oval flange	Cast iron	23	Cable holder	
9	Mechanical seal	Ceramic/Carbon	24	Wire clip	
10	Locking sleeve	AISI 304			
11	Medium diffuser	AISI 304			
12	Impeller	AISI 304			
13	Sleeve	AISI 304			
14	Diffuser with bearing	AISI 304			
15	Guide sleeve	AISI 304			



Package Information

Model	GW (Kg)	L (mm)	W (mm)	H (mm)	Quantity (P2/S22 TEU)
EVS2-6	41.44	730	330	370	336
EVS2-7	43.97	730	330	370	336
EVS2-8	44.74	730	330	370	336





Application

- Suitable for transferring liquids of low viscosity, non-inflammable and non-explosive, not containing solid particles or fibers.
- Water supply & drainage for high-rise buildings, filtration and transfer at waterworks, pressure boosting in main pipe.
- Washing and cleaning systems, boiler feeding, cooling water circulation, water treatment systems, auxiliary system, support equipment.
- Ultra-filtration systems, reverse-osmosis systems.

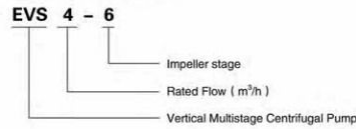
Pump

- AISI304 Impeller, diffuser, barrel
- Stainless steel welded shaft
- Liquid temperature range: +4°C ~ +60°C
- Cast iron water inlet and outlet with special anti-rust treatment
- Liquid PH value: 6.5 - 8.5
- Max operation pressure: 15 bar
- Altitude: up to 1000 m
- C&U bearing

Motor

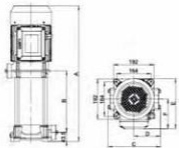
- Motor with copper winding
- Insulation class: F
- Protection class: IP55
- Max. ambient temperature: 40°C

Identification Codes



Technical Data

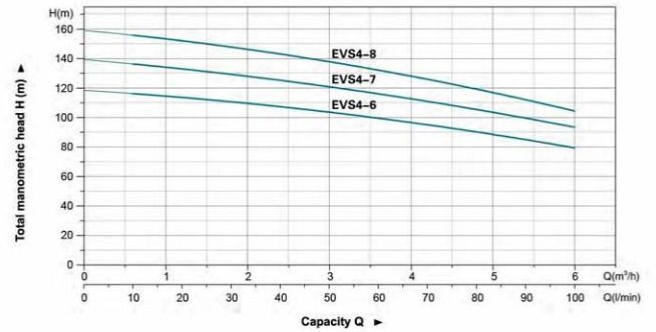
Model	Power		Q (m³/h)											
	kW	HP	0	1	2	3	4	5	6	7	8	9	10	
EVS4-6	3.0	4.0	H(m)	119	114	109	104	97	89	79				
				140	133	128	121	113	104	93				
EVS4-7	3.0	4.0		160	152	146	138	129	117	104				
EVS4-8	3.0	4.0												



Dimension

Model	A	B	C	D	E	F	Inlet	Outlet
EVS4-6	587	241.5	248	126.5	230	134	G1	G1
EVS4-7	612	266.5	248	126.5	238.5	141	G1	G1
EVS4-8	637	291.5	248	126.5	238.5	141	G1	G1

Hydraulic Performance Curves



Materials Table

No.	Part	Material	No.	Part	Material
1	Fan cover	GGP	16	Primary diffuser	AISI 304
2	Fan	PP	17	O-ring	NBR
3	Rear cover	Cast iron	18	Base	Cast iron
4	Bearing		19	Drainage plug	
5	Rotor		20	Barrel	AISI 304
6	Stator		21	Terminal box	ABS
7	Motor base	Cast iron	22	Wiring base	
8	Oval flange	Cast iron	23	Cable holder	
9	Mechanical seal	Ceramic/Carbon	24	Wire clip	
10	Locking sleeve	AISI 304			
11	Medium diffuser	AISI 304			
12	Impeller	AISI 304			
13	Sleeve	AISI 304			
14	Diffuser with bearing	AISI 304			
15	Guide sleeve	AISI 304			



Package Information

Model	GW (kg)	L (mm)	W (mm)	H (mm)	Quantity (P2323 TEU)
EVS4-6	43.2	730	330	370	336
EVS4-7	47.38	730	330	370	336
EVS4-8	48.15	730	330	370	336

