



I Application

Kiber KS progressive cavity pumps are used to transfer products of low and high viscosity as well as products containing soft particles. They are also recommended for use with edible oils, wine, concentrates and beverages in general. They can also be used to transfer viscous food products.

I Design and features

KS type is a sanitary progressive cavity pump. Bare shaft construction with bearing support. Due to the design, they are self-priming and reversible. Open transmission (hygienic design). Eccentric outlet.

I Technical specifications

Materials:

<i>Parts in contact with the product</i>	<i>Stainless steel AISI 316L (1.4404)</i>
<i>Other steel parts</i>	<i>Stainless steel AISI 304 (1.4301)</i>
<i>Bearing support</i>	<i>GG-22</i>
<i>Stator</i>	<i>NBR negro (according to FDA and EC 1935/2004)</i>
<i>Gaskets in contact with the product</i>	<i>FPM (according to FDA and EC 1935/2004)</i>

Single internal mechanical seal EN 12756 I1k (according to FDA and EC 1935/2004):

<i>Rotary part</i>	<i>Silicon carbide (SiC)</i>
<i>Stationary part</i>	<i>Carbon (C)</i>
<i>Gaskets</i>	<i>FPM</i>

Surface finish:

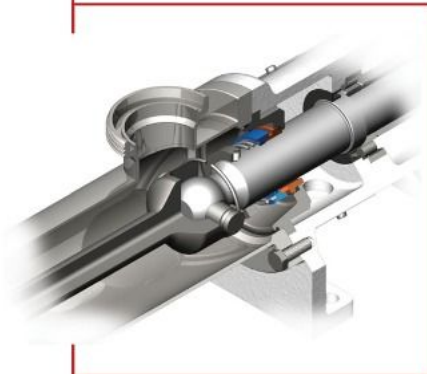
<i>Internal</i>	<i>Bright polish, Ra ≤ 0,8 µm</i>
<i>External</i>	<i>Matt</i>

Connections:

- DIN 11851*
- CLAMP*
- SMS*

Operating limits (depending on the model):

<i>Maximum flow</i>	<i>45 m³/h</i>	<i>198 US GPM</i>
<i>Maximum working pressure</i>		
<i>- single stage</i>	<i>6 bar</i>	<i>87 PSI</i>
<i>- double stage</i>	<i>12 bar</i>	<i>174 PSI</i>
<i>Maximum working temperature</i>	<i>85 °C (depending on materials) 185 °F</i>	
<i>Maximum speed</i>	<i>1450 rpm</i>	



I Technical specifications

Type	Capacity at 100 rev. [l]	Max. flow [m ³ /h]	Max. pressure [bar]		Max. speed [rpm]	Min. starting torque [Nm]	
			Single stage	Double stage		Single stage	Double stage
KS-20	2,8	2,4	6	12	1450	18	30
KS-25	6,7	3,8			950	20	36
KS-30	9,8	5,6			950	25	45
KS-40	23,7	13,5			950	45	80
KS-50	45,1	19,5			720	70	125
KS-60	82	24,6			500	110	190
KS-80	185,4	44,5			400	150	260

I Options

Double pressurized mechanical seal.

Single flushed mechanical seal (Quench).

Mechanical seal: SiC/SiC.

Gland packing.

Stators: white EPDM and black NBR.

Gaskets: EPDM.

Other types of connections.

Heavy-duty transmission.

Fixed transmission.

Pump casing with heating jacket.

Stainless steel trolley.

Electrical control panel.

Bypass pressure relief valve.

Cleaning port (CIP).

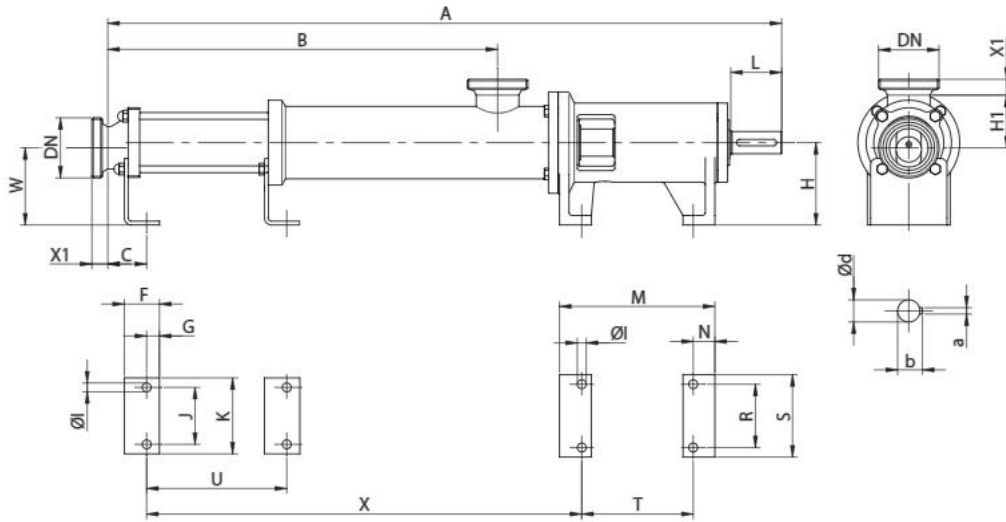
ATEX certification.

I Dimensions

Type	DN	DIN 11851	SMS	CLAMP OD
		X1		
KS-20 2KS-20	40 1½"	22	23	14
KS-25 2KS-25	50 2"	23	23	21
KS-30 2KS-30	50 2"	23	23	21
KS-40 2KS-40	65 2½"	25	27	20
KS-50 2KS-50	80 3"	40	27	21
KS-60 2KS-60	100 4"	30	30	21,5
KS-80 2KS-80	100 4"	30	30	21,5



I Dimensions



Type	DN	d	L	a	b	A	B	C	F	G	H	H1	I	J	K	M	N	R	S	T	U	X	W	Weight kg	
KS-20	40	20	50	6	22,5	612	302																		14
2KS-20	1½"	20	50	6	22,5	712	402	35	35	12	90	61	11	45	70	179	27	70	100	125	-	356	87	456	15
KS-25	50	25	60	8	27,9	773	416																		23
2KS-25	2"	25	60	8	27,9	865	508	39	40	15	110	70	11	60	90	204	32	90	120	140	-	481	107	573	24
KS-30	50	25	60	8	27,9	773	416																		24
2KS-30	2"	25	60	8	27,9	923	566	39	40	15	110	73	11	60	90	204	32	90	120	140	-	481	104	631	25
KS-40	65	35	80	10	38,3	1058	612																		38
2KS-40	2½"	35	80	10	38,3	1248	802	61	55	20	130	83	14	90	120	244	34	100	130	175	-	683	122	873	44
KS-50	80	35	80	10	38,3	1119	673																		42
2KS-50	3"	35	80	10	38,3	1373	927	65	55	20	130	88	14	90	120	244	34	100	130	175	-	740	117	994	51
KS-60	100	48	110	14	51,5	1373	830																		88
2KS-60	4"	48	110	14	51,5	1673	1130	70	60	20	160	119	18	130	170	271	38	150	190	195	-	932	146	1232	107
KS-80	100	48	110	14	51,5	1503	960																		105
2KS-80	4"	48	110	14	51,5	1903	1360	90	60	20	160	133	18	150	190	271	38	150	195	195	-	1042	132	1442	138



I Performance chart

