



Hopper with auger



I Applications

Thanks to the hopper and auger, the KST progressive cavity pumps are suitable for pumping high viscosity products, doughs, pastes and liquids with suspended particles.

I Design and features

KST type is a sanitary progressive cavity pump.
 Bare shaft construction with bearing support.
 Pump casing with hopper.
 Fixed transmission.
 Eccentric outlet.

I Technical specifications

<i>Materials:</i>	
<i>Parts in contact with the product</i>	Stainless steel AISI 316L (1.4404)
<i>Auger</i>	Stainless steel AISI 304 (1.4301)
<i>Other steel parts</i>	Stainless steel AISI 304 (1.4301)
<i>Bearing support</i>	GG-22
<i>Stator</i>	NBR negro (according to FDA and EC 1935/2004)
<i>Gaskets in contact with the product</i>	FPM (according to FDA and EC 1935/2004)

<i>Single internal mechanical seal EN 12756 I1k (according to FDA and EC 1935/2004):</i>	
<i>Rotary part</i>	Silicon carbide (SiC)
<i>Stationary part</i>	Carbon (C)
<i>Gaskets</i>	FPM

<i>Surface finish:</i>	
<i>Internal</i>	Bright polish, except for electropolished auger
<i>External</i>	Matt

<i>Conexiones:</i>	DIN 11851
	CLAMP
	SMS

<i>Operating limits (depending on the model):</i>		
<i>Maximum flow</i>	34 m ³ /h	148 US GPM
<i>Maximum working pressure</i>		
- single stage	6 bar	87 PSI
- double stage	12 bar	174 PSI
<i>Maximum working temperature</i>	85 °C (depending on materials)	185 °F
<i>Maximum speed</i>	500 rpm	



I Technical specifications

Type	Capacity at 100 rev. [l]	Max. flow [m ³ /h]	Max. pressure [bar]		Max. speed [rpm]	Min. starting torque [Nm]	
			Single stage	Double stage		Single stage	Double stage
KST-20	2,8	0,82	6	12	500	18	30
KST-25	6,7	2			500	20	36
KST-30	9,8	2,9			500	25	45
KST-40	23,7	5,7			400	45	80
KST-50	45,1	9,5			350	70	125
KST-60	82	17,2			350	110	190
KST-80	185,4	33,5			300	150	260

I Options

Double pressurized mechanical seal.

Single flushed mechanical seal (Quench).

Mechanical seal: SiC/SiC.

Gland packing.

Stators: white EPDM and black NBR.

Gaskets: EPDM.

Other types of connections.

Heavy-duty transmission.

Stainless steel trolley.

Electrical control panel.

Cleaning port (CIP).

ATEX certification.

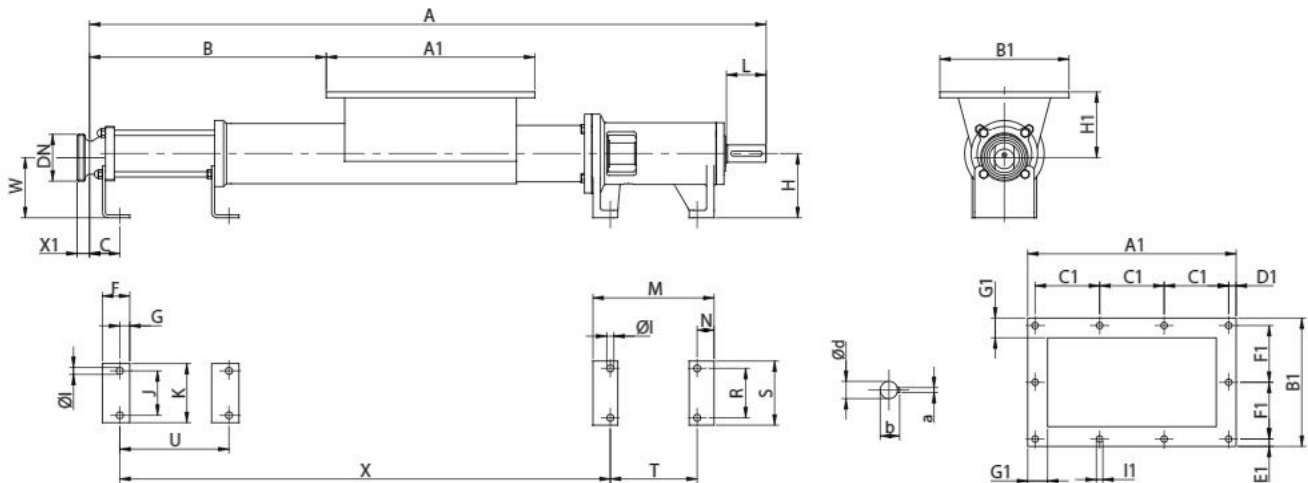
I Dimensions

Type	A1	B1	C1	D1	E1	F1	G1	I1
KST-20 2KST-20	300	210	70	10	10,5	63	25	10
KST-25 2KST-25	365	250	69	10	10	57,5	30	12
KST-30 2KST-30	365	250	69	10	10	57,5	30	12
KST-40 2KST-40	420	260	130	15	15	115	40	14
KST-50 2KST-50	420	260	130	15	15	115	40	14
KST-60 2KST-60	585	340	110	17,5	15,5	103	40	14
KST-80 2KST-80	585	340	110	17,5	15,5	103	40	14

Type	DN	DIN 11851	SMS	CLAMP OD
		X1		
KST-20 2KST-20	40 1½"	22	23	14
KST-25 2KST-25	50 2"	23	23	21
KST-30 2KST-30	50 2"	23	23	21
KST-40 2KST-40	65 2½"	25	27	20
KST-50 2KST-50	80 3"	40	27	21
KST-60 2KST-60	100 4"	30	30	21,5
KST-80 2KST-80	100 4"	30	30	21,5



I Dimensions



Type	DN	d	L	a	b	A	B	C	F	G	H	H1	I	J	K	M	N	R	S	T	U	X	W	Weight kg
KST-20	40	20	50	6	22,5	812	22	35	35	12	90	88	11	45	70	179	27	70	100	125	105	556	87	19
2KST-20	1½"					912	322														205	656		20
KST-25	50	25	60	8	27,9	1008	308	40	40	15	110	128	11	60	90	204	32	90	120	140	166	716	107	30
2KST-25	2"					1100	400														258	808		31
KST-30	50	25	60	8	27,9	1008	308	40	40	15	110	131	11	60	90	204	32	90	120	140	166	716	104	31
2KST-30	2"					1158	458														316	866		32
KST-40	65	35	80	10	38,3	1273	427	55	55	20	130	133	14	90	120	244	34	100	130	175	223	898	122	47
2KST-40	2½"					1463	617														413	1088		53
KST-50	80	35	80	10	38,3	1334	488	55	55	20	130	138	14	90	120	244	34	100	130	175	280	956	117	51
2KST-50	3"					1588	742														534	1209		60
KST-60	100	48	110	14	51,5	1703	613	60	60	20	160	174	18	130	170	271	38	150	190	195	330	1262	146	107
2KST-60	4"					2003	913														630	1562		126
KST-80	100	48	110	14	51,5	1833	473	60	60	20	160	188	18	130	190	271	38	150	190	195	440	1372	132	124
2KST-80	4"					2233	1143														840	1772		157



I Performance chart

