

XSP

Sewage Submersible Pumps



Application

- Wastewater drainage in factories, construction sites and commercial facilities
- Drainage system in municipal sewage treatment plants
- Drainage station in residential quarters
- Municipal projects
- Methane pools and field irrigation in countryside

Pump

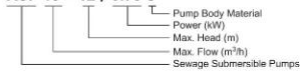
- Max. immersion depth: 5 m
- Max. liquid temperature: +40°C
- Liquid pH value: 4 – 10
- Liquid kinematic viscosity: $7 \times 10^{-7} - 23 \times 10^{-6} \text{ m}^2/\text{s}$
- Max. liquid density: $1.2 \times 10^{-3} \text{ kg/m}^3$

Motor

- Copper winding
- Built-in thermal protector
- Stainless steel welded shaft
- Insulation class: B
- Protection class: IP68

Identification Codes

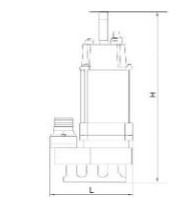
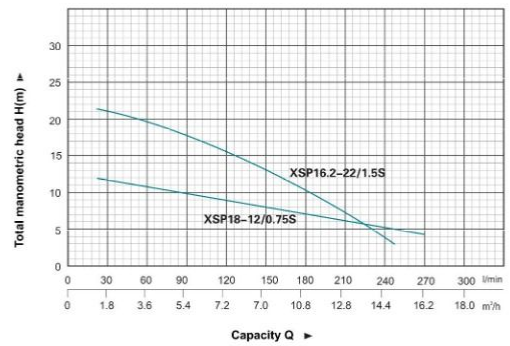
XSP 18 - 12 / 0.75 S



Technical Data

Model	Power (kW)	HP	Outlet diameter (mm)	Voltage (V/Hz)	Max. flow (m)	Max. head (m)	Max. dia. of particle (mm)	GW (kgs)	Packing dimension (cm)
XSP18-12/0.75S	0.75	1.0	50	220/50	300	12	25	22	25.5x19.5x33.5
XSP16.2-22/1.5S	1.5	2.0	40	220/50	270	22	10	28.5	58.5x35x24.5

Hydraulic Performance Curve

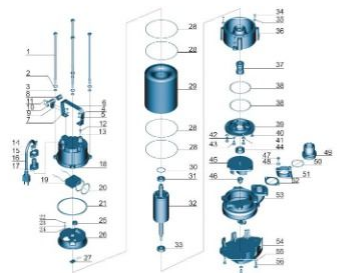


Dimension

Model	GW	L (mm)	W (mm)	H (mm)
XSP18-12/0.75S	50	226	159	500
XSP16.2-22/1.5S	50	275	198	530

Materials Table

No.	Part	Material	No.	Part	Material
1	Ball	Stainless steel	29	Ball	Stainless steel
2	Shredding washer	Stainless steel	30	Wash washer	SSA6
3	Washer	Stainless steel	31	Ball bearing	Stainless steel
4	Ball	Stainless steel	32	Rotor	Stainless steel
5	Washer	Stainless steel	33	Ball bearing	Stainless steel
6	Handle	Stainless steel	34	Screw	Stainless steel
7	Nut	Stainless steel	35	Washer	Stainless steel
8	Protector	PA66	36	Connection part	Stainless steel
9	Cable primer	Stainless steel	37	Mechanical seal	Carbon/ceramic
10	Washer	Stainless steel	38	O-ring	FKM
11	Screw	Stainless steel	39	Oil chamber cover	Stainless steel
12	Ball	Stainless steel	40	Screw	Stainless steel
13	O-ring	FKM	41	Washer	Stainless steel
14	Ball	Stainless steel	42	O-ring	FKM
15	Flange	Stainless steel	43	Screw	Stainless steel
16	Cap	Stainless steel	44	Oil seal	Stainless steel
17	Cable protector	CR	45	Impeller	Stainless steel
18	Capacitor cover	Stainless steel	46	Nut	Stainless steel
19	Capacitor	Stainless steel	47	Ball	Stainless steel
20	O-ring	NBR	48	Washer	Stainless steel
21	Rubber washer	FKM	49	Connector	ABS
22	Screw	Ca3N-49	50	O-ring	FKM
23	Shredding washer	63Al	51	Connection nut	Stainless steel
24	Washer	Ca3N-49	52	Rubber washer	TSM
25	Cable holder	NBR	53	Pump body	Stainless steel
26	Mixer screw	H7205	54	Base plate	Stainless steel
27	Thermal protector	55	Washer	Stainless steel	
28	O-ring	FKM	56	Screw	Stainless steel



XSP

Sewage Submersible Pumps



Application

- Wastewater drainage in factories, construction sites and commercial facilities
- Drainage system in municipal sewage treatment plants
- Drainage station in residential quarters
- Municipal projects
- Methane pools and field irrigation in countryside

Pump

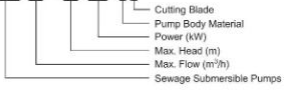
- Max. immersion depth: 5 m
- Max. liquid temperature: +40°C
- Liquid pH value: 4 – 10
- Liquid kinematic viscosity: $7 \times 10^{-7} - 23 \times 10^{-6} \text{ m}^2/\text{s}$
- Max. liquid density: $1.2 \times 10^{-3} \text{ kg/m}^3$

Motor

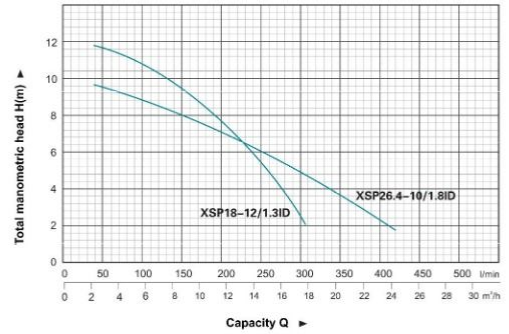
- Copper winding
- Built-in thermal protector
- Stainless steel welded shaft
- Insulation class: B
- Protection class: IP68

Identification Codes

XSP 18 – 12 / 1.3 ID

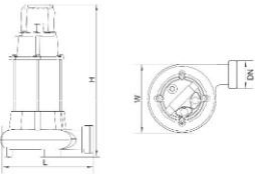


Hydraulic Performance Curve



Technical Data

Model	Power		Outlet diameter (mm)	Voltage (V/Hz)	Max. flow (m)	Max. head (m)	G.W (kgs)	Packing dimension (cm)
	(kW)	HP						
XSP18-12/1.3ID	1.3	1.75	50	220/50	300	12	22	56.5x30.5x24.5
XSP26.4-10/1.8ID	1.8	2.4	75	220/50	440	10	28.5	58.5x35x24.5



Dimension

Model	DN	L (mm)	W (mm)	H (mm)
XSP18-12/1.3ID	50	252	191	510
XSP26.4-10/1.8ID	75	290	196	520

Materials Table

No.	Part	Material	No.	Part	Material
1	Ball	Stainless steel	30	Undersize washer	SSA6
2	Stretching washer	Stainless steel	31	Ball bearing	
3	Washer	Stainless steel	32	Rotor	
4	Ball	Stainless steel	33	Ball bearing	
5	Washer	Stainless steel	34	Screw	Stainless steel
6	Washer	Stainless steel	35	Washer	Stainless steel
7	Imp	Stainless steel	36	Connector part	HT200
8	Impeller cover	HT200	37	Mechanical seal	Carbon/graphite
9	Cable pressure	Stainless steel	38	O-ring	NBR
10	Washer	Stainless steel	39	Oil washer cover	HT200
11	Screw	Stainless steel	40	Screw	Stainless steel
12	Ball	Stainless steel	41	Washer	Stainless steel
13	O-ring	NBR	42	O-ring	NBR
14	Screw	Stainless steel	43	Screw	Stainless steel
15	Flange	Stainless steel	44	O-ring	Stainless steel
16	Cable	Stainless steel	45	Pump body	HT200
17	Cable protector	CR	46	Impeller	HT200
18	Capacitor cover	HT200	47	Shrinkling ring	40Cr
19	Connector	40Cr	48	Washer	Stainless steel
20	O-ring	NBR	49	Ball	Stainless steel
21	Rubber washer	NBR	50	Rubber cover	40Cr
22	Washer	Ca2h20	51	Washer	40Cr
23	Stretching washer	SSA6	52	Screw	Stainless steel
24	Washer	Ca2h20	53	Imp	Steel
25	Line protector	NBR	54	Floor switch	
26	Motor cover	HT200	55	O-ring	NBR
27	Thermal protector	SS	56	Connection nut	J65
28	O-ring	NBR	57	Outlet connector	J65
29	Motor rotor	Stainless steel			

